



# DC DURA CHOICE

Professional Quality

## Table of Contents

### Pressure Gauges & Thermometers

Liquid-Filled Lower Mount Pressure Gauges	1
Liquid-Filled Center Back Mount Pressure Gauges	2
All Stainless Steel Liquid-Filled, Lower Mount Pressure Gauges	3
All Stainless Steel Liquid-Filled, Center Back Mount Pressure Gauges	4
Dry Utility Lower Mount Pressure Gauges	5
Dry Utility Center Back Mount Pressure Gauges	6
Low Pressure Capsule Pressure Gauges	7
Thermometers	8
Thermowells	9
Connection Bushing Adapters	9
Panel Mounting Brackets	10

### Brass Valves

Brass Full Port Ball Valve	28
Lead Free Brass Ball Valve – UL/CSA Certified (w/ optional locking handle)	29
Brass Standard Port, Ball Valve	30
Brass Gas Ball Valve	31
Nickel-Plated Brass Ball Valve	32
Chrome-Plated Brass Mini-Ball Valve	33
Gate Valve	34
Swing Check Valve	35
In-Line Spring Check Valve	36
Vertical Check Valve (Foot Valve)	36

### Stainless Steel Valves

SS Standard Port Ball Valve	12
SS Full Port Ball Valve - Female by Female	13
SS Full Port Ball Valve - Female by Male	14
SS Three-Piece, Full Port Ball Valve	15
SS Full Port, with Mounting Pad	16
SS Full Port, with High Mounting Pad	17
SS Two-Piece Flanged Ball Valve	18
SS Three-Way Ball Valve (L or T Port)	19
SS Gate Valve	20
SS Globe Valve	20
SS Mini-Ball Valves	21
Stainless Steel Needle Valve	22
Carbon Steel Needle Valve	23
SS Y-Spring Check Valve	24
SS Y-Strainer	24
SS In-Line Spring Check Valve	25
SS Vertical Check Valve (Foot Valve)	25
SS Swing Check Valve	26

### High Pressure Valves

Stainless Steel Ball Valve (6,000 PSI)	38
Stainless Steel Ball Valve (3,600 PSI)	39
Stainless Steel Full Port Ball Valve (2,000 PSI)	40
Stainless Steel Standard Port Ball Valves (2,000 PSI)	41
Carbon Steel Ball Valve (6,000 PSI)	42
Carbon Steel Ball Valve (3,600 PSI)	43
Carbon Steel Ball Valve (2,000 PSI)	44
Hex Bar Carbon Steel Ball Valves (2,000 PSI)	45



# Pressure Gauges & Thermometers

[sales@durachoice.com](mailto:sales@durachoice.com)   [www.DuraChoice.com](http://www.DuraChoice.com)   1-800-540-3050   Fax: 1-214-988-1006



## Liquid Filled Pressure Gauges – Lower Mount

Stainless Steel Case

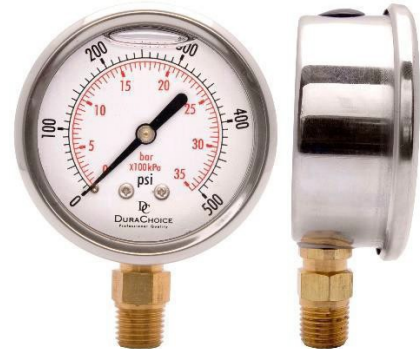
Copper Alloy Wetted Parts

### Specifications:

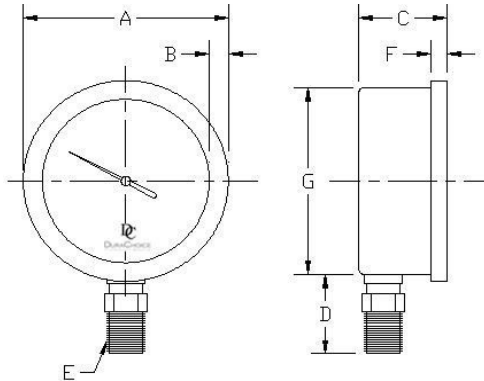
Dial Size:	1-1/2", 2", 2-1/2" or 4" Dial Sizes (Crimped Casing)
Accuracy:	+/- 3/2/3%
Scale:	Dual Scale - PSI / Bar
Movement:	Copper Alloy*
Bourdon Tube:	Copper Alloy*
Pointer	Aluminum Black
Oil Cap	Rubber Black
Window:	Polycarbonate
Case:	Stainless Steel case for protection in harsh environments
Connection:	Copper Alloy Lower Mount*; 1/8" NPT for 1-1/2" dial, 1/4" NPT for 2" and 2-1/2" dials, and 1/4" NPT, 3/8" NPT, or 1/2" NPT for 4" dials

Normal Ambient Temp: -4°F to 140°F

Liquid Filling: (-20°C to 60°C)  
Glycerin oil filled to enhance reliability and integrity; helps dampen the effect of vibration and pulsation; lubricates the movement and extends the life of gauge.



### Dimensions:



	1-1/2"	2"	2-1/2"	4"
Range	Part #	Part #	Part #	Part #
-30HG/0	PB158L-V00	PB204L-V00	PB254L-V00	PB404/3/5L-V00
-30HG/15 PSI	PB158L-V15	PB204L-V15	PB254L-V15	PB404/3/5L-V15
-30HG/30 PSI	PB158L-V30	PB204L-V30	PB254L-V30	PB404/3/5L-V30
-30HG/60 PSI	PB158L-V60	PB204L-V60	PB254L-V60	PB404/3/5L-V60
-30HG/160 PSI	PB158L-V160	PB204L-V160	PB254L-V160	PB404/3/5L-V160
15 PSI	PB158L-015	PB204L-015	PB254L-015	PB404/3/5L-015
30 PSI	PB158L-030	PB204L-030	PB254L-030	PB404/3/5L-030
60 PSI	PB158L-060	PB204L-060	PB254L-060	PB404/3/5L-060
100 PSI	PB158L-100	PB204L-100	PB254L-100	PB404/3/5L-100
160 PSI	PB158L-160	PB204L-160	PB254L-160	PB404/3/5L-160
200 PSI	PB158L-200	PB204L-200	PB254L-200	PB404/3/5L-200
300 PSI	PB158L-300	PB204L-300	PB254L-300	PB404/3/5L-300
400 PSI	PB158L-400	PB204L-400	PB254L-400	PB404/3/5L-400
500 PSI	PB158L-500	PB204L-500	PB254L-500	PB404/3/5L-500
600 PSI	PB158L-600	PB204L-600	PB254L-600	PB404/3/5L-600
1,000 PSI	PB158L-K01	PB204L-K01	PB254L-K01	PB404/3/5L-K01
1,500 PSI	PB158L-K015	PB204L-K015	PB254L-K015	PB404/3/5L-K015
2,000 PSI	PB158L-K02	PB204L-K02	PB254L-K02	PB404/3/5L-K02
3,000 PSI	PB158L-K03	PB204L-K03	PB254L-K03	PB404/3/5L-K03
4,000 PSI	PB158L-K04	PB204L-K04	PB254L-K04	PB404/3/5L-K04
5,000 PSI	PB158L-K05	PB204L-K05	PB254L-K05	PB404/3/5L-K05
6,000 PSI	PB158L-K06	PB204L-K06	PB254L-K06	PB404/3/5L-K06
10,000 PSI	PB158L-K10	PB204L-K10	PB254L-K10	PB404/3/5L-K10
15,000 PSI	PB158L-K15	PB204L-K15	PB254L-K15	PB404/3/5L-K15

SIZE	KEY	A	B	C	D	E	F	G
1-1/2"	in	1.67	0.14	0.94	0.64	1/8" NPT	0.38	1.62
	mm	42.4	3.46	23.8	16.3	1/8" NPT	9.5	41
2"	in	2.12	0.22	1.17	1.12	1/4" NPT	0.25	1.97
	mm	54	5.6	30	28	1/4" NPT	6.4	50
2-1/2"	in	2.67	0.24	1.19	1.16	1/4" NPT	0.26	2.44
	mm	68	6.1	30	29	1/4" NPT	6.5	62
4"	in	4.3	0.3	1.42	1.29	1/4" or 3/8" NPT	0.29	3.91
	mm	109	7.6	36	32.8	1/4" or 3/8" NPT	7.4	99

Information provided here may change without notification  
Other sizes and ranges are available by special order

▲ \* California Prop 65 WARNING: This product can expose you to chemicals such as lead, which is known to the State of California to cause cancer, birth defects or reproductive harm.



## Liquid Filled Pressure Gauges – Center Back Mount

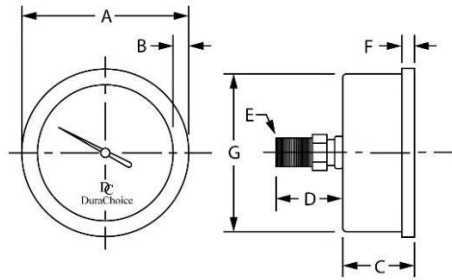
Stainless Steel Case  
Copper Alloy Wetted Parts

### Specifications:

Dial Size: 1-1/2", 2", 2-1/2" or 4" Dial Sizes (Crimped Casing)  
Accuracy: +/- 3/2/3%  
Scale: Dual Scale - PSI / Bar  
Movement: Copper Alloy\*  
Bourdon Tube: Copper Alloy\*  
Window: Polycarbonate  
Case: Stainless Steel case for protection in harsh environments  
Connection: Copper Alloy Center Back Mount\*; 1/8" NPT for 1-1/2" dial, 1/4" NPT for 2 and 2-1/2" dials, and 1/4" NPT, 3/8" NPT, or 1/2" NPT for 4" dials

Normal Ambient Temp: -4°F to 140°F  
(-20°C to 60°C)

Liquid Filling: Glycerin oil filled to enhance reliability and integrity; helps dampen the effect of vibration and pulsation; lubricates the movement and extends the life of the gauge.



	1-1/2"	2"	2-1/2"	4"
Range	Part #	Part #	Part #	Part #
-30HG/0	PB158B-V00	PB204B-V00	PB254B-V00	PB404/3/5B-V00
-30HG/15 PSI	PB158B-V15	PB204B-V15	PB254B-V15	PB404/3/5B-V15
-30HG/30 PSI	PB158B-V30	PB204B-V30	PB254B-V30	PB404/3/5B-V30
-30HG/160 PSI	PB158B-V160	PB204B-V160	PB254B-V160	PB404/3/5B-V160
15 PSI	PB158B-015	PB204B-015	PB254B-015	PB404/3/5B-015
30 PSI	PB158B-030	PB204B-030	PB254B-030	PB404/3/5B-030
60 PSI	PB158B-060	PB204B-060	PB254B-060	PB404/3/5B-060
100 PSI	PB158B-100	PB204B-100	PB254B-100	PB404/3/5B-100
160 PSI	PB158B-160	PB204B-160	PB254B-160	PB404/3/5B-160
200 PSI	PB158B-200	PB204B-200	PB254B-200	PB404/3/5B-200
300 PSI	PB158B-300	PB204B-300	PB254B-300	PB404/3/5B-300
400 PSI	PB158B-400	PB204B-400	PB254B-400	PB404/3/5B-400
600 PSI	PB158B-600	PB204B-600	PB254B-600	PB404/3/5B-600
1,000 PSI	PB158B-K01	PB204B-K01	PB254B-K01	PB404/3/5B-K01
1,500 PSI	PB158B-K015	PB204B-K015	PB254B-K015	PB404/3/5B-K015
2,000 PSI	PB158B-K02	PB204B-K02	PB254B-K02	PB404/3/5B-K02
3,000 PSI	PB158B-K03	PB204B-K03	PB254B-K03	PB404/3/5B-K03
5,000 PSI	PB158B-K05	PB204B-K05	PB254B-K05	PB404/3/5B-K05
6,000 PSI	PB158B-K06	PB204B-K06	PB254B-K06	PB404/3/5B-K06
10,000 PSI	PB158B-K10	PB204B-K10	PB254B-K10	PB404/3/5B-K10
15,000 PSI	PB158B-K15	PB204B-K15	PB254B-K15	PB404/3/5B-K15

### Dimensions:

SIZE	KEY	A	B	C	D	E	F	G
1-1/2"	in	1.67	0.14	0.94	0.64	1/8" NPT	0.38	1.62
	mm	42.4	3.46	23.8	16.3	1/8 NPT	9.5	41
2"	in	2.12	0.22	1.17	1.12	1/4" NPT	0.25	1.97
	mm	54	5.6	30	28	1/4" NPT	6.4	50
2-1/2"	in	2.67	0.24	1.19	1.16	1/4" NPT	0.26	2.44
	mm	68	6.1	30	29	1/4" NPT	6.5	62
4"	in	4.3	0.3	1.42	1.29	1/4" or 3/8" NPT	0.29	3.91
	mm	109	7.6	36	32.8	1/4" or 3/8" NPT	7.4	99

**Need a Mounting Bracket?**

See Page 10.

**Looking for Needle Valves?**

See Pages 22-23.

# All Stainless Steel Liquid Filled Pressure Gauges – Lower Mount

Stainless Steel Case & Wetted Parts

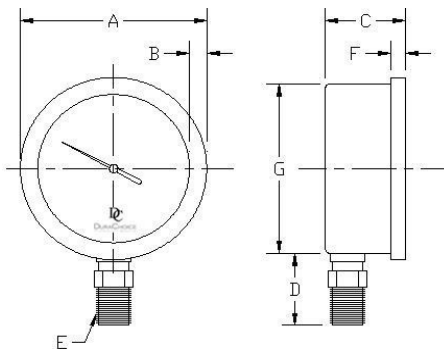
Liquid Filled

## Specifications:

Dial Size:	2-1/2" or 4" Dial Size (Crimped Casing)
Accuracy:	+/- 3/2/3%
Scale:	Dual Scale - PSI / Bar
Movement:	Stainless Steel
Bourdon Tube:	Stainless Steel
Window:	Polycarbonate
Case:	Stainless Steel case for protection in harsh environments
Connection:	Stainless Steel Lower Mount; 1/4" NPT for 2-1/2" dials, and 1/4" NPT, 3/8" NPT or 1/2" NPT for 4" dials
Normal Ambient Temp:	-4°F to 140°F (-20°C to 60°C)
Liquid Filling:	Glycerin oil filled to enhance reliability and integrity; helps dampen the effect of vibration and pulsation; lubricates the movement and extends the life of gauge.



## Dimension:



Range	2-1/2"	4"		
	1/4" NPT	1/4" NPT	3/8" NPT	1/2" NPT
-30HG/0	PS254L-V00	PS404L-V00	PS403L-V00	PS405L-V00
-30HG/15 PSI	PS254L-V15	PS404L-V15	PS403L-V15	PS405L-V15
15 PSI	PS254L-015	PS404L-015	PS403L-015	PS405L-015
30 PSI	PS254L-030	PS404L-030	PS403L-030	PS405L-030
60 PSI	PS254L-060	PS404L-060	PS403L-060	PS405L-060
100 PSI	PS254L-100	PS404L-100	PS403L-100	PS405L-100
160 PSI	PS254L-160	PS404L-160	PS403L-160	PS405L-160
200 PSI	PS254L-200	PS404L-200	PS403L-200	PS405L-200
300 PSI	PS254L-300	PS404L-300	PS403L-300	PS405L-300
400 PSI	PS254L-400	PS404L-400	PS403L-400	PS405L-400
500 PSI	PS254L-500	PS404L-500	PS403L-500	PS405L-500
600 PSI	PS254L-600	PS404L-600	PS403L-600	PS405L-600
1,000 PSI	PS254L-K01	PS404L-K01	PS403L-K01	PS405L-K01
1,500 PSI	PS254L-K015	PS404L-K015	PS403L-K015	PS405L-K015
2,000 PSI	PS254L-K02	PS404L-K02	PS403L-K02	PS405L-K02
3,000 PSI	PS254L-K03	PS404L-K03	PS403L-K03	PS405L-K03
4,000 PSI	PS254L-K04	PS404L-K04	PS403L-K04	PS405L-K04
5,000 PSI	PS254L-K05	PS404L-K05	PS403L-K05	PS405L-K05
6,000 PSI	PS254L-K06	PS404L-K06	PS403L-K06	PS405L-K06
10,000 PSI	PS254L-K10	PS404L-K10	PS403L-K10	PS405L-K10
15,000 PSI	PS254L-K15	PS404L-K15	PS403L-K15	PS405L-K15

SIZE	KEY	A	B	C	D	E	F	G
2-1/2"	in	2.67	0.24	1.19	1.16	1/4" NPT	129	2.44
	mm	68	6.1	30	29	1/4" NPT	6.5	62
4"	in	4.30	0.3	1.42	129	1/4" or 3/8" NPT	0.29	3.91
	mm	109	7.6	36	32.8	1/4" or 3/8" NPT	7.4	99

- ❖ Information provided here may change without notification
- ❖ Other sizes and ranges are available by special order

⚠ \* California Prop 65 WARNING: This product can expose you to chemicals such as lead, which is known to the State of California to cause cancer, birth defects or reproductive harm.

# All Stainless Steel Liquid Filled Pressure Gauges – Center Back Mount

Stainless Steel Case & Wetted Parts

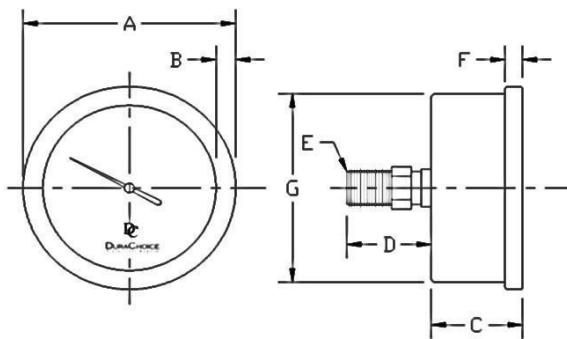
Liquid Filled

## Specifications:

Dial Size:	2-1/2" or 4" Dial Size (Crimped Casing)
Accuracy:	+/- 3/2/3%
Scale:	Dual Scale - PSI / Bar
Movement:	Stainless Steel
Bourdon Tube:	Stainless Steel
Window:	Polycarbonate
Case:	Stainless Steel case for protection in harsh environments
Connection:	Stainless Steel Center Back Mount; 1/4" NPT for 2-1/2" dials, and 1/4" NPT or 3/8" NPT for 4" dials
Normal Ambient Temp:	-4°F to 140°F (-20°C to 60°C)
Liquid Filling:	Glycerin oil filled to enhance reliability and integrity; helps dampen the effect of vibration and pulsation; lubricates the movement and extends the life of gauge.



## Dimension:



Range	2-1/2"	4"	
	1/4" NPT	1/4" NPT	3/8" NPT
-30HG/0	PS254B-V00	PS404B-V00	PS403B-V00
-30HG/15 PSI	PS254B-V15	PS404B-V15	PS403B-V15
15 PSI	PS254B-015	PS404B-015	PS403B-015
30 PSI	PS254B-030	PS404B-030	PS403B-030
60 PSI	PS254B-060	PS404B-060	PS403B-060
100 PSI	PS254B-100	PS404B-100	PS403B-100
160 PSI	PS254B-160	PS404B-160	PS403B-160
200 PSI	PS254B-200	PS404B-200	PS403B-200
300 PSI	PS254B-300	PS404B-300	PS403B-300
400 PSI	PS254B-400	PS404B-400	PS403B-400
500 PSI	PS254B-500	PS404B-500	PS403B-500
600 PSI	PS254B-600	PS404B-600	PS403B-600
1,000 PSI	PS254B-K01	PS404B-K01	PS403B-K01
1,500 PSI	PS254B-K015	PS404B-K015	PS403B-K015
2,000 PSI	PS254B-K02	PS404B-K02	PS403B-K02
3,000 PSI	PS254B-K03	PS404B-K03	PS403B-K03
4,000 PSI	PS254B-K04	PS404B-K04	PS403B-K04
5,000 PSI	PS254B-K05	PS404B-K05	PS403B-K05
6,000 PSI	PS254B-K06	PS404B-K06	PS403B-K06
10,000 PSI	PS254B-K10	PS404B-K10	PS403B-K10
15,000 PSI	PS254B-K15	PS404B-K15	PS403B-K15

SIZE	KEY	A	B	C	D	E	F	G
2-1/2"	in	2.67	0.24	1.19	1.16	1/4" NPT	0.26	2.44
	mm	68	6.1	30	29	1/4" NPT	6.5	62
4"	in	4.30	0.30	1.42	1.29	1/4" or 3/8" NPT	0.29	3.91
	mm	109	7.6	36	32.8	1/4" or 3/8" NPT	7.4	99

Looking for a  
Mounting Bracket?

See Page 10.



## Dry Utility Pressure Gauges – Lower Mount

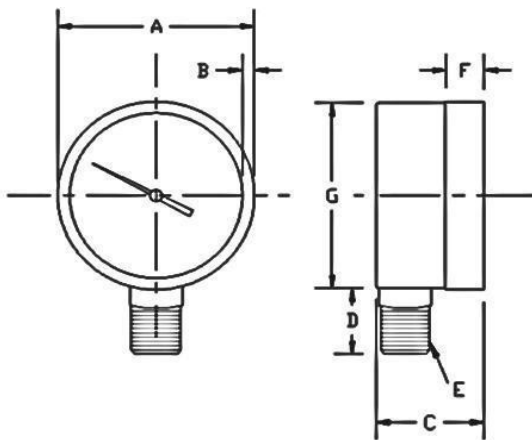
Steel Case (painted black)

### Specifications:

Dial Size:	1-1/2", 2" or 2-1/2" Dial Sizes (Crimped Casing)
Accuracy:	+/- 4/3/4 %
Scale:	Dual Scale - PSI / Bar
Movement:	Copper Alloy*
Bourdon Tube:	Copper Alloy*
Window:	Glass
Case:	Steel case for protection in harsh environments
Connection:	Copper Alloy Lower Mount*; 1/8" NPT (for 1-1/2" dial) and 1/4" NPT (for 2" and 2-1/2" dials)
Normal Ambient Temp:	-4°F to 140°F (-20°C to 60°C)



### Dimension:



	1-1/2"	2"	2-1/2"
Range	Part #	Part #	Part #
-30HG/0	PA158L-V00	PA204L-V00	PA254L-V00
-30HG/30 PSI	PA158L-V30	PA204L-V30	PA254L-V30
15 PSI	PA158L-015	PA204L-015	PA254L-015
30 PSI	PA158L-030	PA204L-030	PA254L-030
60 PSI	PA158L-060	PA204L-060	PA254L-060
100 PSI	PA158L-100	PA204L-100	PA254L-100
160 PSI	PA158L-160	PA204L-160	PA254L-160
200 PSI	PA158L-200	PA204L-200	PA254L-200
300 PSI	PA158L-300	PA204L-300	PA254L-300
400 PSI	PA158L-400	PA204L-400	PA254L-400
500 PSI	PA158L-500	PA204L-500	PA254L-500
600 PSI	PA158L-600	PA204L-600	PA254L-600
1,000 PSI	PA158L-K01	PA204L-K01	PA254L-K01
1,500 PSI	PA158L-K015	PA204L-K015	PA254L-K015
2,000 PSI	PA158L-K02	PA204L-K02	PA254L-K02
3,000 PSI	PA158L-K03	PA204L-K03	PA254L-K03
4,000 PSI	PA158L-K04	PA204L-K04	PA254L-K04
5,000 PSI	PA158L-K05	PA204L-K05	PA254L-K05
6,000 PSI	PA158L-K06	PA204L-K06	PA254L-K06

SIZE	KEY	A	B	C	D	E	F	G
1-1/2"	in	1.67	0.14	0.94	0.64	1/8" NPT	0.38	1.62
	mm	42.4	3.46	23.8	16.3	1/8" NPT	9.5	41
2"	in	2.09	0.15	1.11	0.77	1/4" NPT	0.43	2.02
	mm	53.1	3.8	28.5	19.5	1/4" NPT	10.8	51.3
2-1/2"	in	2.45	0.13	1.15	0.82	1/4" NPT	0.46	2.4
	mm	62.1	3.4	29.3	20.8	1/4" NPT	11.7	61

**Do you need a  
Needle Valve?**

See our selection  
on pages 22-23.

# Dry Utility Pressure Gauges – Center Back Mount

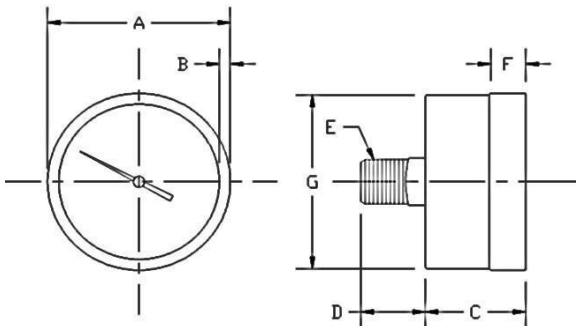
Steel Case (painted black)

## Specifications:

Dial Size:	1-1/2", 2" or 2-1/2" Dial Sizes (Crimped Casing)
Accuracy:	+/- 4/3/4 %
Scale:	Dual Scale - PSI / Bar
Movement:	Copper Alloy
Bourdon Tube:	Copper Alloy
Window:	Glass
Case:	Steel case for protection in harsh environments
Connection:	Copper Alloy Center Back Mount; 1/8" NPT (for 1-1/2" dial) and 1/4" NPT (for 2" and 2-1/2" dial)
Normal Ambient Temp:	-4°F to 140°F (-20°C to 60°C)



## Dimension:



	1-1/2"	2"	2-1/2"
Range	Part #	Part #	Part #
-30HG/0	PA158B-V00	PA204B-V00	PA254B-V00
-30HG/30 PSI	PA158B-V30	PA204B-V30	PA254B-V30
15 PSI	PA158B-015	PA204B-015	PA254B-015
30 PSI	PA158B-030	PA204B-030	PA254B-030
60 PSI	PA158B-060	PA204B-060	PA254B-060
100 PSI	PA158B-100	PA204B-100	PA254B-100
160 PSI	PA158B-160	PA204B-160	PA254B-160
200 PSI	PA158B-200	PA204B-200	PA254B-200
300 PSI	PA158B-300	PA204B-300	PA254B-300
400 PSI	PA158B-400	PA204B-400	PA254B-400
500 PSI	PA158B-500	PA204B-500	PA254B-500
600 PSI	PA158B-600	PA204B-600	PA254B-600
1,000 PSI	PA158B-K01	PA204B-K01	PA254B-K01
2,000 PSI	PA158B-K02	PA204B-K02	PA254B-K02
3,000 PSI	PA158B-K03	PA204B-K03	PA254B-K03
4,000 PSI	PA158B-K04	PA204B-K04	PA254B-K04
5,000 PSI	PA158B-K05	PA204B-K05	PA254B-K05
6,000 PSI	PA158B-K06	PA204B-K06	PA254B-K06

SIZE	KEY	A	B	C	D	E	F	G
1-1/2"	in	1.67	0.14	0.94	0.64	1/8" NPT	0.38	1.62
	mm	42.4	3.46	23.8	16.3	1/8" NPT	9.5	41
2"	in	2.09	0.15	1.11	0.77	1/4" NPT	0.43	2.02
	mm	53.1	3.8	28.5	19.5	1/4" NPT	10.8	51.3
2-1/2"	in	2.45	0.13	1.15	0.82	1/4" NPT	0.46	2.4
	mm	62.1	3.4	29.3	20.8	1/4" NPT	11.7	61

- ❖ Information provided here may change without notification
- ❖ Other sizes and ranges are available by special order

## Low Pressure Capsule Gauge w/ Calibration Dial

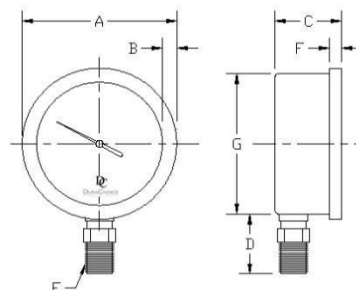
Stainless Steel Case

Copper Alloy Wetted Parts

Highly accurate capsule gauge design measures pressure and vacuum as low as 15 inH<sub>2</sub>O. Available in dual scale PSI/Bar or OZin<sup>2</sup>/inH<sub>2</sub>O. Made for work in gaseous media. The gauges have a recalibration screw to adjust the pointer if necessary.

### Specifications:

Dial Size:	2-1/2"
Accuracy:	+/- 1.5%
Scale:	Dual Scale - PSI/Bar or OZin <sup>2</sup> /inH <sub>2</sub> O
Movement:	Copper Alloy*
Capsule Element:	Copper Alloy*
Window:	Glass; Removable
Case:	Stainless Steel case
Connection:	Copper Alloy Lower Mount*; 1/4"
NPT Normal Ambient Temp: -4°F to 140°F (-20°C to 60°C)	



2-1/2"	
Range	Part #
3 PSI	PLS254L-003
5 PSI	PLS254L-005
10 PSI	PLS254L-010
15 PSI	PLS254L-015
15 inH <sub>2</sub> O	PLS254L-015X09
35 inH <sub>2</sub> O	PLS254L-035X20
60 inH <sub>2</sub> O	PLS254L-060X35
100 inH <sub>2</sub> O	PLS254L-100X60

2-1/2"		
Key	mm	in
A	73	2.87
B	8	0.31
C	37	1.46
D	22	0.87
E	1/4" NPT	1/4" NPT
F	10	0.39
G	65	2.6

## Low Pressure Capsule Gauge w/ Calibration Dial

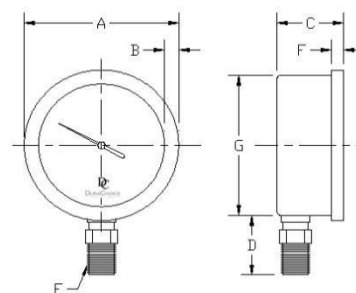
Black Steel Case

Copper Alloy Wetted Parts

Highly accurate capsule gauge designed to measure pressure and vacuum as low as 15 inH<sub>2</sub>O. Available in dual scale PSI/Bar or OZin<sup>2</sup>/inH<sub>2</sub>O. Made for work in gaseous media. The gauges have a recalibration screw to adjust the pointer if necessary.

### Specifications:

Dial Size:	2-1/2"
Accuracy:	+/- 1.5%
Scale:	Dual Scale - PSI / Bar or OZin <sup>2</sup> / inH <sub>2</sub> O
Movement:	Copper Alloy*
Capsule Element:	Copper Alloy*
Window:	Acrylic; Removable
Case:	Black Steel case
Connection:	Copper Alloy Lower Mount*; 1/4"NPT
Normal Ambient Temp: -4°F to 140°F (-20°C to 60°C)	



2-1/2"	
Range	Part #
3 PSI	PL254L-003
5 PSI	PL254L-005
10 PSI	PL254L-010
15 PSI	PL254L-015
15 inH <sub>2</sub> O	PL254L-015X09
35 inH <sub>2</sub> O	PL254L-035X20
60 inH <sub>2</sub> O	PL254L-060X35
100 inH <sub>2</sub> O	PL254L-100X60

2-1/2"		
Key	mm	in
A	66	2.6
B	n/a	n/a
C	40	1.57
D	22	0.87
E	1/4" NPT	1/4" NPT
F	n/a	n/a
G	66	2.6



## Water Test Gauge

### Features

- Dial: 2"
- Case: Black Painted Steel
- Lens: Acrylic
- Ring: Black Painted Steel
- Internal: Brass
- Connection: Top Connection 3/4" Female Swivel Hose



### Dimensions

Dial size	A	B	C	D
2"	2.07	4	1.12	2.05

## Bi-Metal Thermometer

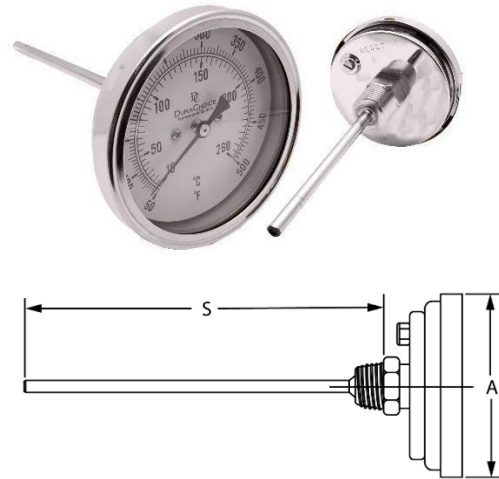
### Stainless Steel Case

#### Application:

This high-quality, economical thermometer is designed for limited space and OEM applications. It has a stainless-steel back connection, case and wetted parts.

#### Specifications:

Dial Size:	3" or 5"
Case:	304 Stainless Steel
Stem:	1/4" Diameter; 304 Stainless Steel
Stem Length:	2-1/2" to 9" available
Connection:	1/2" NPT, 304 Stainless Steel
Accuracy:	1% of full scale



3" (A)			3" (A) with Calibration Dial			5" (A)			5" (A) with Calibration Dial		
Part #	Stem (S)	Temp. (°F)	Part #	Stem (S)	Temp. (°F)	Part #	Stem (S)	Temp. (°F)	Part #	Stem (S)	Temp. (°F)
T325250	2 1/2"	0-250	T3D25250	2 1/2"	0-250	T525250	2 1/2"	0-250	T5D25250	2 1/2"	0-250
T325500	2 1/2"	50-500	T3D25500	2 1/2"	50-500	T525500	2 1/2"	50-500	T5D25500	2 1/2"	50-500
T340250	4"	0-250	T3D40250	4"	0-250	T540250	4"	0-250	T5D40250	4"	0-250
T340500	4"	50-500	T3D40500	4"	50-500	T540500	4"	50-500	T5D40500	4"	50-500
T360250	6"	0-250	T3D60250	6"	0-250	T560250	6"	0-250	T5D60250	6"	0-250
T360500	6"	50-500	T3D60500	6"	50-500	T560500	6"	50-500	T5D60500	6"	50-500
T390250	9"	0-250	T3D90250	9"	0-250	T590250	9"	0-250	T5D90250	9"	0-250
T390500	9"	50-500	T3D90500	9"	50-500	T590500	9"	50-500	T5D90500	9"	50-500

## Adjustable Thermometers

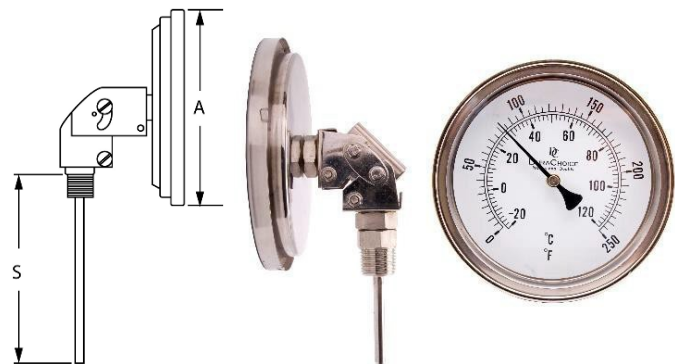
### Stainless Steel Case

#### Application:

This high-quality, economical thermometer is designed for limited space and OEM applications. It has an adjustable angle stem with a stainless-steel connection, case and external wetted parts.

#### Specifications:

Dial Size:	5"
Case:	304 Stainless Steel
Stem:	1/4" Diameter; 304 Stainless Steel
Stem Length:	2-1/2" to 9" available
Connection:	1/2" NPT, 304 Stainless Steel standard
Accuracy:	+/- 1% of full scale



5" (A)			5" (A) with Calibration Dial		
Part #	Stem (S)	Temp. (°F)	Part #	Stem (S)	Temp. (°F)
TA525250	2 1/2"	0-250	TA5D25250	2 1/2"	0-250
TA525500	2 1/2"	50-500	TA5D25500	2 1/2"	50-500
TA540250	4"	0-250	TA5D40250	4"	0-250
TA540500	4"	50-500	TA5D40500	4"	50-500
TA560250	6"	0-250	TA5D60250	6"	0-250
TA560500	6"	50-500	TA5D60500	6"	50-500
TA590250	9"	0-250	TA5D90250	9"	0-250
TA590500	9"	50-500	TA5D90500	9"	50-500

▲ \* California Prop 65 WARNING: This product can expose you to chemicals such as lead, which is known to the State of California to cause cancer, birth defects or reproductive harm.

## Thermowells

Solid Stainless Steel 316 or 304

### Application:

Thermowells are recommended for temperature instruments in all process systems where high pressure, high speeds, or damaging materials (viscous, abrasive or corrosive) are present individually or in combination. A properly selected thermowell will protect the temperature instrument from possible damage resulting from these process variables. A thermowell also permits removal of the temperature instrument for replacement, repair or testing without affecting the process media or the system



### Specifications

Process Connections: Threaded  
Instrument Connection: 1/2" or 3/4" NPT Standard  
Shank Configurations: Straight  
Shank Length: 2-1/2" to 9" available  
Bore Diameter: Fits 1/4" dia. instruments

	Size	316 S.S.	Heavy Duty 316 S.S.	304 S.S.
1/2" NPT	2 1/2"	TW6250	TW6H25	TW4250
	4"	TW6400	TW6H40	TW4400
	6"	TW6600	TW6H60	TW4600
	9"	TW6900	TW6H90	TW4900
3/4" NPT	2 1/2"	TW60325	TW603H25	TW40325
	4"	TW60340	TW603H40	TW40340
	6"	TW60360	TW603H60	TW40360
	9"	TW60390	TW603H90	TW40390

## Connection Bushing Adapters

**Application:** Used to change the gauge's connection size.

**Material:** Copper Alloy\*



Part #	Description
PG3A2	3/8" to 1/2" adapter
PG3A4	3/8" to 1/4" adapter
PG4A2	1/2" to 1/4" adapter

- ❖ Information provided here may change without notification
- ❖ Other sizes and range are available on special order

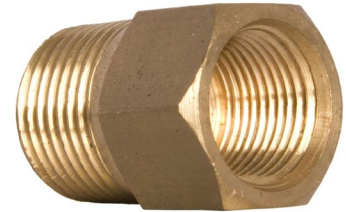
⚠ \* California Prop 65 WARNING: This product can expose you to chemicals such as lead, which is known to the State of California to cause cancer, birth defects or reproductive harm.



## Connection Hex Lead Brass Bushing Adapters – Generic

### Features

- End Style: MNPT x FNPT
- Fitting/Connector Type: Bushing
- Material: Brass
- Pressure Rating: 200 to 125
- Temperature Rating: -20 to 400
- Type: Hex Head



Part #	Description
PG3A2G	3/8" to 1/2" adapter
PG3A4G	3/8" to 1/4" adapter
PG4A2G	1/2" to 1/4" adapter

⚠ \* California Prop 65 WARNING: This product can expose you to chemicals such as lead, which is known to the State of California to cause cancer, birth defects or reproductive harm.

## Panel Mounting Brackets

**Application:** Suitable for different sizes of oil filled gauges.



**Materials:**

Back Flanged Bracket - SS 304  
Front Flanged Bracket - SS 304

Part #	Description
PGBF250	Pressure Gauge Back Flanged Mounting 2-1/2"
PGBF400	Pressure Gauge Back Flanged Mounting 4"
PGFF250	Pressure Gauge Front Flanged Mounting 2-1/2"
PGFF400	Pressure Gauge Front Flanged Mounting 4"
PGUC150	Pressure Gauge U-Clamp Mounting 2"
PGUC200	Pressure Gauge U-Clamp Mounting 2"
PGUC250	Pressure Gauge U-Clamp Mounting 2-1/2"
PGUC400	Pressure Gauge U-Clamp Mounting 4"

- Information provided here may change without notification
- Other sizes are available by special order



# Stainless Steel Valves

Stainless Steel  
Valves

[sales@durachoice.com](mailto:sales@durachoice.com)   [www.DuraChoice.com](http://www.DuraChoice.com)   1-800-540-3050   Fax: 1-214-988-1006



## Stainless Steel Ball Valves (SS316) – 1 piece Standard Port

### Features:

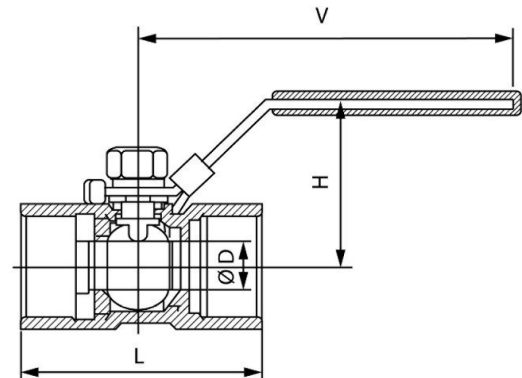
- S.S. 316 investment cast body
- Working pressure of 1,000 PSI (WOG)
- Suitable for full range of liquids and gas
- Pure PTFE seals and seats
- Temperature range: -40°F to 400°F
- Low operation torque
- 100% individually tested
- Blowout-proof stem
- NPT threaded ends to ANSI B1.20.1
- Heavy duty locking handle with blue vinyl insulator

### Dimensions

Part #	Size	D	L	H	W
VBS01-025	1/4"	0.20	1.54	1.30	2.70
VBS01-038	3/8"	0.28	1.73	1.38	3.54
VBS01-050	1/2"	0.36	2.24	1.57	3.86
VBS01-075	3/4"	0.49	2.32	1.73	3.86
VBS01-100	1"	0.59	2.80	2.01	4.37
VBS01-125	1 1/4"	0.79	3.07	2.24	4.37
VBS01-150	1 1/2"	0.98	3.27	2.52	5.47
VBS01-200	2"	1.26	3.94	2.76	5.47
VBS01-250	2 1/2"	1.50	5.04	2.76	7.44
VBS01-300	3"	1.97	6.02	3.03	7.44

### Materials List

Designation	Material
Body	SS316 (CF8M)
Ball	SS316 (CF8M)
Cap	SS316 (CF8M)
Ball Seat	RPTFE
Thrust Washer	PTFE
Stem Packing	PTFE
Stem	SS 304
Packing Ring	SS 304
Spring Washer	SS 304
Stem Nut	SS 304
Handle	SS 304
Handle Lock	SS 304
Handle Cover	Plastic



Part Prefix	Design Elements
VBS41GNL	<ul style="list-style-type: none"> <li>• Stainless Steel 304 Body, Ball and Cap</li> <li>• No locking handle</li> <li>• No DuraChoice logo</li> <li>• Red handle cover</li> </ul>
VBS01B	<ul style="list-style-type: none"> <li>• Stainless Steel 316 Body, Ball and Cap</li> <li>• Butterfly handle</li> <li>• Blue handle cover</li> </ul>
Add size suffix (e.g. "-025", "-050", etc.) from dimensions table to specify appropriate NPT connection.	

## Stainless Steel Ball Valves (SS316) – 2 piece Full Port

SS316 or SS304

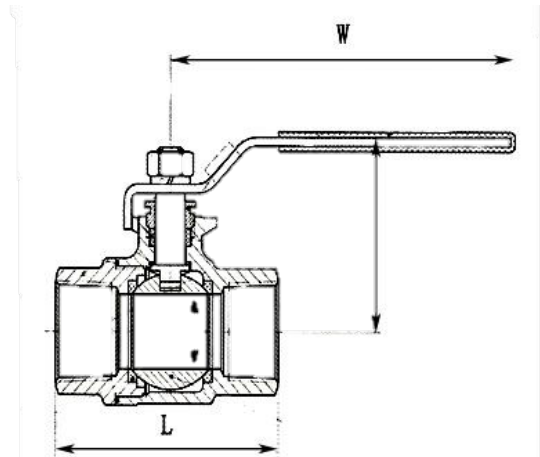
### Features:

- S.S. 316 investment cast body
- Working pressure of 1,000 PSI (WOG)
- Minimal pressure drop due to large full-size ports
- Suitable for full range of liquids and gas
- Temperature range: -40°F to 400°F
- Low operation torque
- 100% individually tested
- Blowout-proof stem
- NPT threaded ends to ANSI B1.20.1
- Heavy duty locking handle with blue vinyl insulator



### Dimensions

Part #	Size	D	L	H	W
VBS02-025	1/4"	0.43	2.02	2.17	4.08
VBS02-038	3/8"	0.49	2.01	2.15	4.17
VBS02-050	1/2"	0.58	2.28	2.12	4.15
VBS02-075	3/4"	0.79	2.55	2.62	5.32
VBS02-100	1"	0.98	3.06	2.78	5.31
VBS02-125	1 1/4"	1.26	3.52	3.12	6.19
VBS02-150	1 1/2"	1.50	3.86	3.35	6.13
VBS02-200	2"	1.70	4.80	3.87	7.39
VBS02-250	2 1/2"	2.46	6.39	4.89	8.92
VBS02-300	3"	2.94	7.25	5.25	8.98
VBS02-400	4"	3.65	8.92	6.75	12.00



### Materials List

Designation	Material
Body	SS 316 (CF8M)
Ball	SS 316 (CF8M)
Cap	SS 316 (CF8M)
Seat	RPTFE
Thrust Washer	304
Stem Packing	PTFE
Stem	SS 316
Body Seal	PTFE
Gland Nut	SS 304
Stem Nut	SS 304
Stem Seal	PTFE
Handle	SS 304
Handle Cover	Plastic

### Options

Part Prefix	Design Elements
VBS02G	<ul style="list-style-type: none"> <li>• Stainless Steel 316 body, ball and cap</li> <li>• Red handle; No DuraChoice logo</li> </ul>
VBS42	<ul style="list-style-type: none"> <li>• Stainless Steel 304 body, ball and cap</li> </ul>
VBS42G	<ul style="list-style-type: none"> <li>• Stainless Steel 304 body, ball and cap</li> <li>• Red handle; No DuraChoice logo</li> </ul>
VBS42GNL	<ul style="list-style-type: none"> <li>• Stainless Steel 304 body, ball and cap</li> <li>• Red Handle; No logo</li> <li>• No locking handle</li> </ul>
Add size suffix (e.g. "-025", "-050", etc.) from dimensions table to specify appropriate NPT connection.	

here may change without notification

- Other sizes are available by special order

⚠ \* California Prop 65 WARNING: This product can expose you to chemicals such as DEHP, which is known to the State of California to cause cancer, birth defects or reproductive harm.

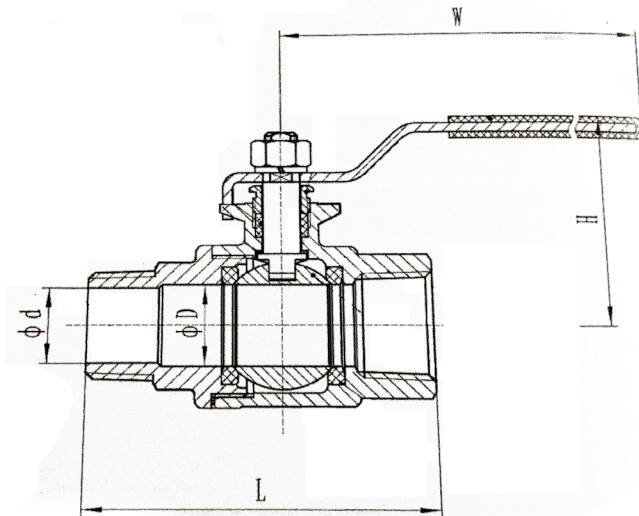
## Stainless Steel Ball Valves (SS316) - 2 piece Full Port

### Features:

- Investment Casting
- Working pressure of 1,000 PSI(WOG)
- Suitable for full range of liquids and gases
- Temperature range: -40 F to 400 F
- Low operation torque
- 100% individually tested
- Blowout-proof stem
- NPT threaded ends to AMSE B1.20.1
- Heavy duty locking handle with blue vinyl insulator
- Locking handle



Part #	Size	D	L	H	W
VBS02-025	1/4"	0.43	2.02	2.17	4.08
VBS02-038	3/8"	0.49	2.01	2.15	4.17
VBS02-050	1/2"	0.58	2.28	2.12	4.15
VBS02-075	3/4"	0.79	2.55	2.62	5.32
VBS02-100	1"	0.98	3.06	2.78	5.31
VBS02-125	1 1/4"	1.26	3.52	3.12	6.19
VBS02-150	1 1/2"	1.50	3.86	3.35	6.13
VBS02-200	2"	1.70	4.80	3.87	7.39
VBS02-250	2 1/2"	2.46	6.39	4.89	8.92
VBS02-300	3"	2.94	7.25	5.25	8.98
VBS02-400	4"	3.65	8.92	6.75	12.00



- Information provided here may change without notification
- Other sizes are available by special order

### Materials List

Designation	Material
Body	SS 316 (CF8M)
Ball	SS 316 (CF8M)
Cap	SS 316 (CF8M)
Seat	RPTFE
Thrust Washer	304
Stem Packing	PTFE
Stem	SS 316
Body Seal	PTFE
Gland Nut	SS 304
Stem Nut	SS 304
Stem Seal	PTFE
Handle	SS 304
Handle Cover	Plastic

## Stainless Steel Ball Valves (SS316) – 3 piece Full Port

### Features:

- Working pressure of 1,000 PSI (WOG)
- S.S. 316 investment casting body
- Blowout-proof stem
- Locking device handle
- Casting Approved AD2000-Wo
- Thread: ASME B1.20.1
- Inspection Testing: API598

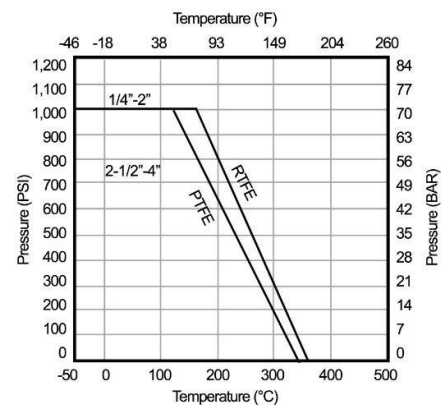
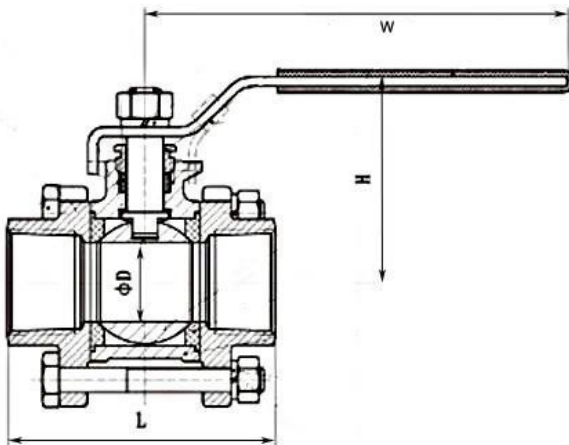


### Dimensions

Part #	Size	D	H	W	L
VBS03-025	1/4"	0.49	1.89	4.13	2.83
VBS03-038	3/8"	0.49	1.89	4.13	2.83
VBS03-050	1/2"	0.59	1.96	4.13	2.83
VBS03-075	3/4"	0.79	2.04	4.96	3.15
VBS03-100	1"	0.98	2.56	5.67	3.35
VBS03-125	1 1/4"	1.26	2.75	5.67	4.13
VBS03-150	1 1/2"	1.49	3.35	7.44	4.45
VBS03-200	2"	1.96	3.66	7.44	5.20
VBS03-250	2 1/2"	2.56	4.57	8.82	6.69
VBS03-300	3"	2.99	4.92	8.82	7.32
VBS03-400	4"	3.7	7.09	9.88	8.66

### Materials List

Designation	Material
Body	SS 316 (CF8M)
Ball	SS 316 (CF8M)
Cap	SS 316 (CF8M)
Seat	RPTFE
Thrust Washers	PTFT/SS 304
Stem Packing	PTFT
Stem	SS 304
Bolt	SS 304
Nut	SS 304
Gland Nut	SS 304
Stem Nut	SS 304
Handle	SS 304
Handle Cover	Plastic





## Stainless Steel Ball Valves (SS316) – 2 piece with Mounting Pad

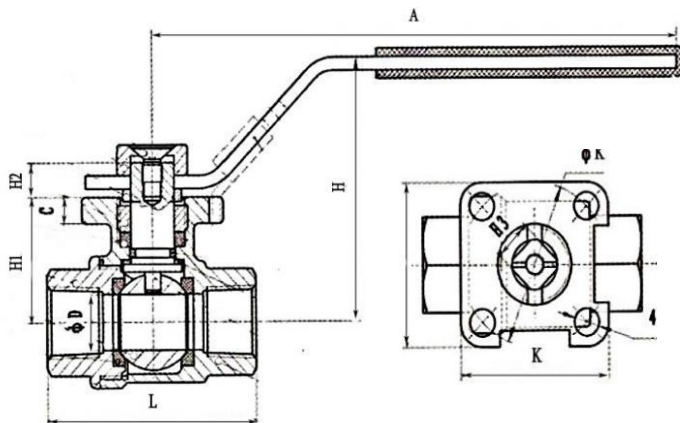
### Features:

- S.S. 316 investment cast full port body
- ISO-5211 square stem mounting pad for actuator
- Working pressure of 1,000 PSI(WOG)
- Suitable for full range of liquids and gas
- Pure PTFE seals and seats
- Temperature range: -40°F to 400°F
- Low operation torque
- 100% individually tested
- Blowout-proof stem
- Female x Female NPT threaded ends to ANSI B1.20.1
- Heavy duty locking handle with blue vinyl insulator



### Dimensions

Part #	Size	A	C	D	H1	H2	H3	H	J	K	L
VBSP2-025	1/4"	5.24	0.24	0.50	1.12	0.31	0.35	2.38	0.24	1.42	2.09
VBSP2-038	3/8"	5.24	0.24	0.50	1.12	0.31	0.35	2.38	0.24	1.42	2.09
VBSP2-050	1/2"	5.24	0.24	0.59	1.18	0.31	0.35	2.44	0.24	1.42	2.48
VBSP2-075	3/4"	5.24	0.24	0.79	1.38	0.31	0.35	2.64	0.24	1.42	2.99
VBSP2-100	1"	5.24	0.24	0.98	1.73	0.33	0.35	3.01	0.24	1.42	3.54
VBSP2-125	1 1/4"	5.24	0.24	1.26	1.89	0.33	0.35	3.17	0.24	1.42	3.94
VBSP2-150	1 1/2"	5.91	0.31	1.50	2.44	0.41	0.43	3.78	0.28	1.97	4.53
VBSP2-200	2"	5.91	0.31	1.97	2.78	0.41	0.43	4.21	0.28	1.97	5.31
VBSP2-250	2 1/2"	7.32	0.31	2.56	3.35	0.57	0.55	4.84	0.35	2.76	6.38
VBSP2-300	3"	7.32	0.31	2.99	3.74	0.57	0.55	5.24	0.35	2.76	7.40



### Materials List

Description	Material
Body	SS 316 (CF8M)
Ball	SS 316 (CF8M)
Bonnet	SS 316 (CF8M)
Seat	RPTFE
Thrust Washer	PTFE
Stem Packing	PTFE
Stem	SS 304
Cover	SS 304
Body Seat	PTFE
Gland	SS 304
Bolt	SS 304
O-Ring	NBR/VITON
Locking Device	SS 304
Handle	SS 304
Handle Cover	Plastic

⚠ \* California Prop 65 WARNING: This product can expose you to chemicals such as DEHP, which is known to the State of California to cause cancer, birth defects or reproductive harm.

## Stainless Steel Ball Valves (SS316) – 2 piece with Mounting Pad

### Features:

- S.S. 316 investment cast full port body
- ISO-5211 square stem mounting pad for actuator
- Working pressure of 1,000 PSI (WOG)
- Suitable for full range of liquids and gas
- Pure PTFE seals and seats
- Temperature range: -40°F to 400°F
- Low operation torque
- 100% individually tested
- Blowout-proof stem
- Female x Female NPT threaded ends to ANSI B1.20.1
- Heavy duty locking handle with blue vinyl insulator

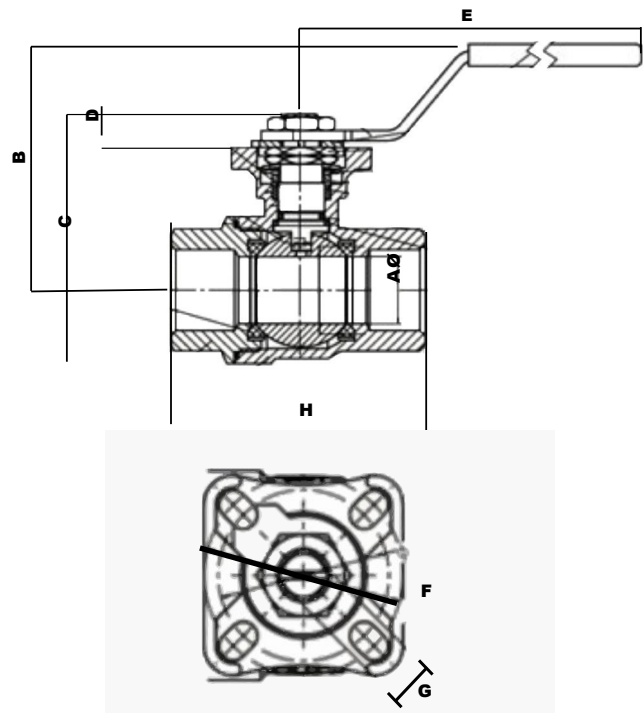


### Dimensions

Part #	Size	A	B	C	D	E	F	G	H
VBSP2H-025	1/4"	0.43	2.45	1.88	0.42	4.61	1.68	0.51	2.00
VBSP2H-038	3/8"	0.49	2.46	1.92	0.43	4.62	1.67	0.51	2.01
VBSP2H-050	1/2"	0.59	2.60	1.90	0.43	4.61	1.67	0.51	2.21
VBSP2H-075	3/4"	0.79	3.00	2.09	0.43	5.53	1.71	0.52	3.00
VBSP2H-100	1"	0.95	2.98	2.20	0.39	5.51	2.15	0.51	3.31
VBSP2H-150	1 1/2"	1.47	3.70	3.04	0.45	8.12	2.78	0.66	4.04
VBSP2H-200	2"	1.86	4.00	3.42	0.40	8.12	2.51	0.67	5.38

### Materials List

Designation	Material
Body	SS 316 (CF8M)
Ball	SS 316 (CF8M)
Bonnet	SS 316 (CF8M)
Seat	RPTFE
Thrust Washer	PTFE
Stem Packing	PTFE
Stem	SS 304
Cover	SS 304
Body Seat	PTFE
Gland	SS 304
Bolt	SS 304
O-Ring	NBR/VITON
Locking Device	SS 304
Handle	SS 304
Handle Cover	Plastic



• Information provided here may change without notification

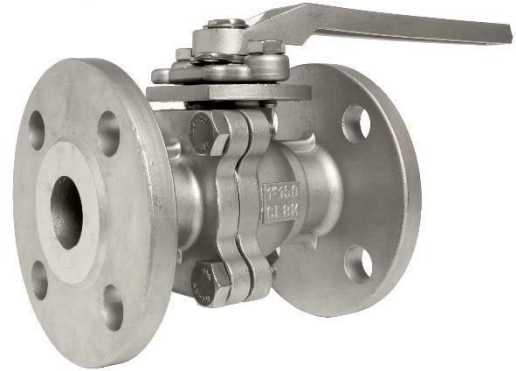
• Other sizes are available by special order

⚠ \* California Prop 65 WARNING: This product can expose you to chemicals such as DEHP, which is known to the State of California to cause cancer, birth defects or reproductive harm.

## Stainless Steel Flanged Ball Valves (SS316) – 2 piece

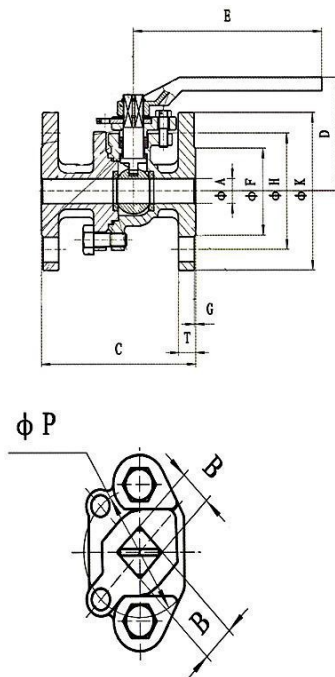
### Features:

- S.S. 316 investment cast body
- Full Port ANSI-CLASS 150lb.
- Suitable for full range of liquids and gas
- Pure PTFE seals and seats
- Temperature range: -60°F to 450°F
- Low operation torque
- 100% individually tested
- Blowout-proof stem
- Heavy-duty stainless-steel handle



### Dimensions

Part #	Size (inches)	A	B	D	E	P	150 (PN2.0MPa)							
							F	H	K	T	G	N	M	C
VBSF1-050	1/2"	0.59	0.43	2.87	5.12	1.65	1.38	2.38	3.50	0.43	0.08	0.16	0.59	4.25
VBSF1-075	3/4"	0.79	0.43	2.99	5.12	1.65	1.69	2.76	3.86	0.43	0.08	0.16	0.59	4.61
VBSF1-100	1"	0.98	0.55	3.39	6.30	1.97	2.01	3.13	4.25	0.47	0.08	0.16	0.59	5.00
VBSF1-125	1 1/4"	1.26	0.55	3.58	6.30	1.97	2.52	3.50	4.61	0.51	0.08	0.16	0.59	5.51
VBSF1-150	1 1/2"	1.50	0.67	4.69	7.87	2.76	2.87	3.88	5.00	0.59	0.08	0.16	0.59	6.50
VBSF1-200	2"	1.97	0.67	5.00	7.87	2.76	3.62	4.74	5.98	0.63	0.08	0.16	0.75	7.01
VBSF1-250	2 1/2"	2.56	0.87	5.35	7.87	4.02	4.13	5.49	7.01	0.71	0.08	0.16	0.75	7.48
VBSF1-300	3"	2.99	0.87	6.46	12.80	4.02	5.00	6.00	7.48	0.75	0.08	0.16	0.75	7.99
VBSF1-400	4"	3.70	0.87	7.01	12.80	4.02	6.18	7.50	9.02	0.94	0.08	0.31	0.75	9.02



### Materials List

Description	Material
Body	SS 316 (CF8M)
Ball	SS 316 (CF8M)
Seat	RPTFE
Cap	SS 316 (CF8M)
Stem	SS 304
Stem Packing	PTFE
Body Seat	PTFE
Stem Seal	PTFE
Bolt	SS 304
Gland	SS 316 (CF8M)
Stopper	SS 304
Handle	SS 316 (CF8M)
Snap Ring	SS 304
Nut	SS 304

- Information provided here may change without notification
- Other sizes are available by special order

## 3-Way Stainless Steel Ball Valves (SS316) – L or TPort with Mounting Pad

### Features:

- S.S. 316 investment cast standard portbody
- Working pressure of 1,000 PSI (WOG)
- ISO-5211 mounting pad for actuator
- Suitable for full range of liquids and gas
- Pure PTFE seals and seats
- Temperature range: -40°F to 400°F
- Low operation torque
- 100% individually tested
- Blowout-proof stem
- Heavy-duty stainless-steel handle
- Female x Female NPT threaded ends to ANSI B1.20.1
- Heavy duty locking handles with blue vinyl insulator

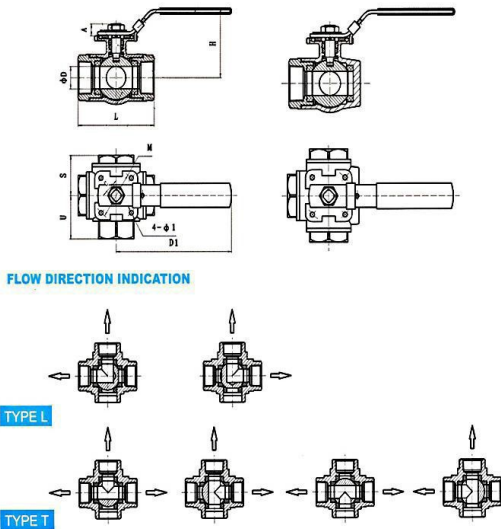


### Dimensions

Part #	Size	D	L	C	H	D1	M	Φ1	A	S	U
VBS3L/T-025	1/4"	0.38	2.74	0.35	2.62	5.43	1.65	0.21	0.35	1.48	1.48
VBS3L/T-038	3/8"	0.43	2.74	0.35	2.68	5.66	1.65	0.21	0.35	1.48	1.48
VBS3L/T-050	1/2"	0.50	2.95	0.35	2.68	4.57	1.65	0.24	0.39	1.30	1.48
VBS3L/T-075	3/4"	0.63	3.35	0.35	2.87	4.57	1.65	0.24	0.39	1.56	1.67
VBS3L/T-100	1"	0.79	3.94	0.43	3.27	5.98	1.97	0.28	0.47	1.97	2.05
VBS3L/T-125	1 1/4"	0.98	4.53	0.43	3.50	5.98	1.97	0.28	0.47	1.99	2.26
VBS3L/T-150	1 1/2"	1.26	4.88	0.55	3.82	7.36	2.76	0.35	0.63	2.24	2.44
VBS3L/T-200	2"	1.50	5.79	0.55	4.17	7.36	2.76	0.35	0.63	2.56	2.95

### Materials List

Description	Material
Body	SS 316 (CF8M)
Ball	SS 316 (CF8M)
Cap	SS 316 (CF8M)
Ball Seat	RPTFE
Stem Packing	PTFE
Stem	SS 304
Gland Nut	SS 304
Stem Nut	SS 304
Locking Device	SS 304
Stem Seal	PTFE
Body Seal	PTFE
Blind Cap	SS 316 (CF8M)
Blind Cap Seal	PTFE
Handle	SS 304
Handle Cover	Plastic

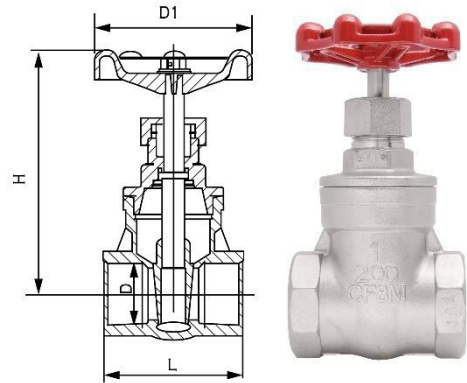


- ❖ Information provided here may change without notification
- ❖ Other sizes and range are available on specialorder

## Stainless Steel Gate Valves (SS316)

### Features:

- S.S. 316 investment cast body
- Working pressure of 200 PSI (WOG)
- Suitable for full range of liquids and gas
- Temperature range: -60°F to 450°F
- 100% individually tested
- Female x Female NPT threaded ends to ANSI B1.20.1



### Dimensions

Part #	Size	D	L	H	D1	CV
VGS01-050	1/2"	0.59	2.17	3.62	2.76	17.60
VGS01-075	3/4"	0.79	2.36	3.90	2.76	32.00
VGS01-100	1"	0.98	2.60	4.45	3.15	54.00
VGS01-125	1 1/4"	1.26	2.99	5.04	3.15	97.00
VGS01-150	1 1/2"	1.57	3.39	5.79	3.94	135.00
VGS01-200	2"	1.97	3.78	6.61	3.94	230.00

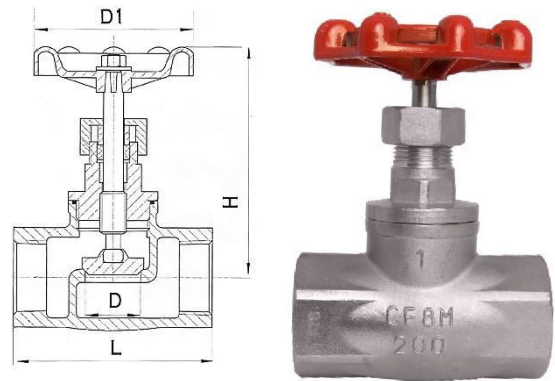
### Materials List

Description	Material
Body/Bonnet	SS 316 (CF8M)
Disc	SS 316 (CF8M)
Stem	SS 316
Packing/Lock Nuts	SS 316
Wheel Nut	SS 304
Hand Wheel	Aluminum
Ring/Stop Ring	SS 304
Gasket/Packing	RPTFE

## Stainless Steel Globe Valves – 200 PSI

### Features:

- S.S. 316 investment cast body
- Working pressure of 200 PSI (WOG)
- Suitable for all liquids and gas
- Great for regulating flow
- Less friction at seal means longer life
- Female x Female NPT threaded ends to ANSI B1.20.1



### Dimensions

Part #	Size	D	L	H	D1
VGS02-075	3/4"	0.79	3.14	4.17	2.76
VGS02-100	1"	0.98	3.54	4.65	3.15
VGS02-125	1 1/4"	1.26	4.13	5.28	3.15
VGS02-150	1 1/2"	1.57	4.72	5.98	3.94
VGS02-200	2"	1.96	5.55	6.77	3.94

### Materials List

Description	Material
Body	SS 316 (CF8M)
Cap	SS 316 (CF8M)
Stem	SUS 304
Washer/Nut	SS 316
Ring	SS 304
Hand Wheel	Aluminum
Ring/Gland Ring	SS 304
Gasket/Stem Packing	PTFE

Information provided here may change without notification

Other sizes are available by special order

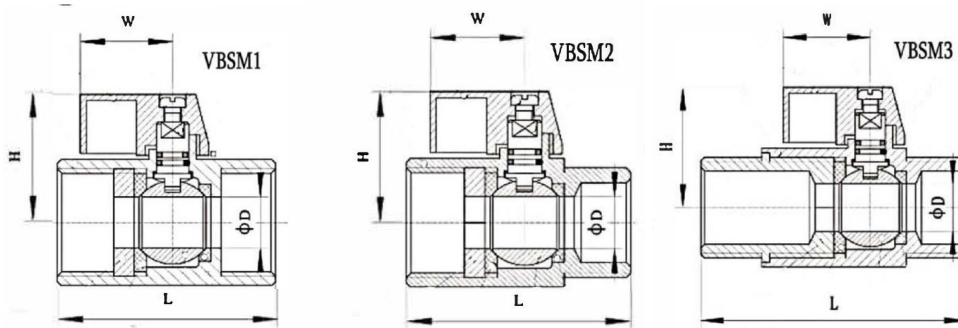
⚠ \* California Prop 65 WARNING: This product can expose you to chemicals such as DEHP, which is known to the State of California to cause cancer, birth defects or reproductive harm.



## Stainless Steel Mini-Ball Valves (SS316)

### Features

- SS 316 (CF8M) body and ball - for extra strength and corrosion resistance
- Working pressure of 1 000 PSI(WOG)
- Double seal system allows flow can go in either direction
- Heavy duty Zinc Alloy handles (painted blue)
- Fast 1/4 turn open or closed operation
- Each valve individually tested for maximum safety



### Materials List

Description	Material
Body	SS 316 (CF8M)
Ball	SS 316 (CF8M)
Cap	SS 316 (CF8M)
Ball Seat	RPTFE
Stem	SS 304
Bolt	SS 304
Lever	Aluminum

### Dimensions

Type	Part #	Size	D	L	H	W
Female by Female	VBSM1-025	1/4"	0.27	1.65	1.04	0.89
	VBSM1-038	3/8"	0.27	1.65	1.04	0.89
	VBSM1-050	1/2"	0.36	1.81	1.11	0.89
	VBSM1-075	3/4"	0.49	2.13	1.24	0.89
	VBSM1-100	1"	0.59	2.56	1.34	0.89
Female by Male	VBSM2-025	1/4"	0.27	1.65	1.04	0.89
	VBSM2-038	3/8"	0.27	1.65	1.04	0.89
	VBSM2-050	1/2"	0.36	1.81	1.11	0.89
	VBSM2-075	3/4"	0.49	2.13	1.24	0.89
	VBSM2-100	1"	0.59	2.56	1.34	0.89
Male by Male	VBSM3-025	1/4"	0.27	1.96	1.04	0.89
	VBSM3-038	3/8"	0.27	1.96	1.04	0.89
	VBSM3-050	1/2"	0.36	2.28	1.11	0.89
	VBSM3-075	3/4"	0.49	2.75	1.24	0.89

## Stainless Steel Needle Valves (SS316) – 10,000 PSI

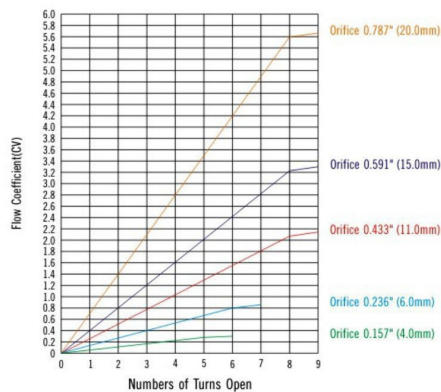
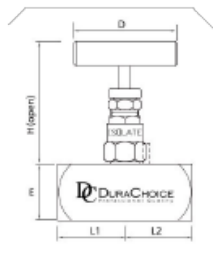
### Features:

- 10,000 psi at -65° to 100°F
- Bubble-tight metal-to-metal seat for positive shutoff
- 2 piece non-rotating hardened (17-4PH) tip for first time seal and long service life
- ISO Manufacturer
- Pressure responsive multi-ring/piston packing for compression and pressure dynamic sealing
- Metal-to-metal body bonnet seal for high pressure and high temperature sealing
- Unique bonnet locking cam. No accidental removal of head unit, or loosening due to vibration
- Backing sealing stem to extend packing life
- NPT threaded
- 100% Hydrostatic testing



### Materials List

Part #	Material	(mm, in.)		CV	NPT Connection Type/Size		Dimension, (mm, inch)							
					Inlet	Outlet	L1		L2		E		H	
VNS01-025	SS316	4	0.157	0.35	1/4" Female	1/4" Female	30.5	1.2	30.5	1.2	25.2	0.99	82.5	3.25
VNS01-050	SS316				1/2" Female	1/2" Female	34.2	1.35	34.2	1.35	28.9	1.14	86.6	3.41
VNS01-075	SS316	5	0.197	0.73	3/4" Female	3/4" Female	38	1.5	38	1.5	38.2	1.5	94.9	3.74
VNS01-100	SS316				1" Female	1" Female	42.5	1.68	42.5	1.68	44.8	1.76	106	4.17
VNS02-025	SS316	4	0.157	0.35	1/4" Female	1/4" Male	36.65	1.46	36.65	1.46	24.8	0.98	84.6	3.33
VNS02-050	SS316	5	0.197	0.73	1/2" F NPT	1/2" Male	36.5	1.44	36.5	1.44	28.6	1.13	86	3.39



### Dimensions

Description	Material
Body	SS 316
Bonnet	SS 316
Stem	SS 316
Stem Tip	SS 316
Gland	SS 316
Lock Nut	SS 316
Packing Washer	SS 316
Lock Pin	SS 304
Handle	SS
Set Screw	SS
Packing	PTFE
Dust Cap	Nylon

### Working Pressure

Temp. (°F)	PSI
-65°~100°	10,000
200°	9,290
300°	8,390
400°	7,705
500°	7,105
600°	6,770
700°	6,480
800°	6,230
900°	5,905
1,000°	5,450
1,100°	4,835
1,200°	3,085

⚠ \* California Prop 65 WARNING: This product can expose you to chemicals such as DEHP, which is known to the State of California to cause cancer, birth defects or reproductive harm.

## Carbon Steel Needle Valves (CS-A105) – 10,000 PSI

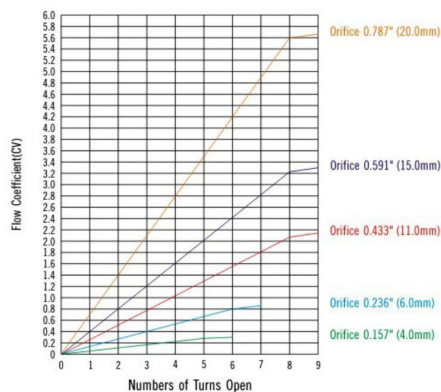
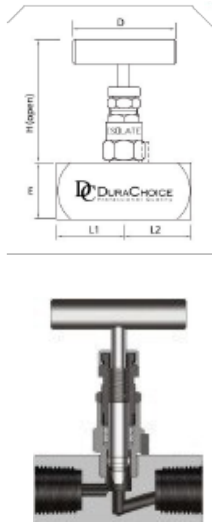
### Features:

- 10,000 psi at -65° to 100°F
- Bubble-tight metal-to-metal seat for positive shutoff
- 2 piece non-rotating hardened (17-4PH) tip for first time seal and long service life
- Pressure responsive multi-ring/piston packing for compression and pressure dynamic sealing
- Metal-to-metal body bonnet seal for high pressure and high temperature sealing
- Unique bonnet locking cam. No accidental removal of head unit, or loosening due to vibration
- Backing sealing stem to extend packing life
- NPT threaded
- 100% Hydrostatic testing



### Materials List

Part #	Material	(mm, in.)			NPT Connection Type/Size		Dimension, (mm, inch)							
					Inlet	Outlet	L1		L2		E		H	
VNC01-025	CS-A105	4	0.157	0.35	1/4" Female	1/4" Female	30.5	1.2	30.5	1.2	25.2	0.99	82.5	3.25
VNC01-050	CS-A105				1/2" Female	1/2" Female	34.2	1.35	34.2	1.35	28.9	1.14	86.6	3.41
VNC01-075	CS-A105	5	0.197	0.73	3/4" Female	3/4" Female	38	1.5	38	1.5	38.2	1.5	94.9	3.74
VNC01-100	CS-A105				1" Female	1" Female	42.5	1.68	42.5	1.68	44.8	1.76	106	4.17
VNCA2-025	CS-A105	4	0.157	0.35	1/4" Female	1/4" Male	27.1	1.07	27.1	1.07	24.5	0.97	81.8	3.22
VNC02-025	CS-A105	4	0.157	0.35	1/4" Female	1/4" Male	36.65	1.46	36.65	1.46	24.8	0.98	84.6	3.33
VNC02-050	CS-A105	5	0.197	0.73	1/2" F NPT	1/2" Male	36.5	1.44	36.5	1.44	28.6	1.13	86	3.39



### Dimensions

Description	Material
Body	SS 316
Bonnet	SS 316
Stem	SS 316
Stem Tip	SS 316
Gland	SS 316
Lock Nut	SS 316
Packing Washer	SS 316
Lock Pin	SS 304
Handle	SS
Set Screw	SS
Packing	PTFE
Dust Cap	Nylon

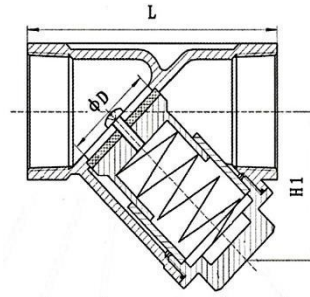
### Working Pressure

Temp. (°F)	PSI
-65°~100°	10,000
200°	9,290
300°	8,390
400°	7,705
500°	7,105
600°	6,770
700°	6,480
800°	6,230
900°	5,905
1,000°	5,450
1,100°	4,835
1,200°	3,085

## Stainless Steel Spring-Assisted Y Check Valves (SS316)

### Features:

- S.S. 316 investment cast body
- Working pressure of 800 PSI (WOG)
- Suitable for full range of liquids and gas
- Temperature range: -40°F to 400°F
- 100% individually tested
- NPT threaded ends to ANSI B1.20.1



### Dimensions

Part #	Size	L	H1
VCSY1-025	1/4"	2.56	1.38
VCSY1-038	3/8"	2.56	1.38
VCSY1-050	1/2"	2.56	1.38
VCSY1-075	3/4"	3.15	1.77
VCSY1-100	1"	3.54	2.24
VCSY1-125	1 1/4"	4.13	2.28
VCSY1-150	1 1/2"	4.72	2.60
VCSY1-200	2"	5.51	3.03

### Materials List

Description	Material
Body	SS 316 (CF8M)
Disc	SS 316 (CF8M)
Disc Seat	PTFE
Gasket	PTFE
Spring	SS 304

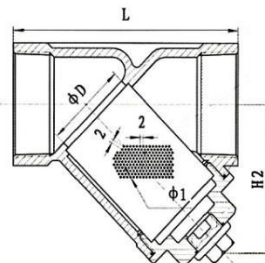
## Stainless Steel Y-Strainers (SS316)

### Features:

- S.S. 316 investment cast body
- Working pressure of 800 PSI (WOG)
- Suitable for full range of liquids and gas
- Temp.: -40°F to 400°F
- 20 mesh (≈ 1 mm) or 100 mc (≈ 150 mesh) screen
- NPT threaded ends to ANSI B1.20.1

### Materials List

Desc.	Material
Body	SS 316 (CF8M)
Bonnet	SS 316 (CF8M)
Gasket	PTFE
Screen	SS 304



### Dimensions

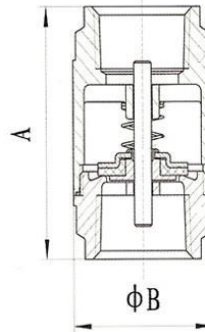
Part #	Size	D	L	H2	Part #	Size	D	L	H2
VYSS1-025	1/4"	0.53	2.53	0.95	VYSS1-125	1 1/4"	1.26	4.13	2.28
VYSS1-038	3/8"	0.59	2.53	0.95	VYSS1-150	1 1/2"	1.57	4.72	2.6
VYSS1-050	1/2"	0.70	2.56	1.38	VYSS1-200	2"	1.97	5.51	3.03
VYSS1-075	3/4"	0.79	3.15	1.77	VYSS1-300	3"	3.20	7.89	3.97
VYSS1-100	1"	0.98	3.54	2.24					

**Note:** 100 mc screen strainers have same dimensions as 20 mesh above. Part numbers include the suffix "-100mc".

## Stainless Steel In-Line Spring-Assisted Check Valves (SS316) – 2 piece

### Features

- S.S. 316 investment cast body
- ANSI Class 150 lb.
- Suitable for full range of liquids and gas
- Temperature range: -40°F to 400°F
- 100% individually tested
- NPT threaded ends to ANSI B1.20.1



### Dimensions

Part #	Size	A	B	Part #	Size	A	B
VCSL1-025	1/4"	1.94	1.18	VCSL1-125	1 1/4"	3.23	2.38
VCSL1-038	3/8"	2.13	1.36	VCSL1-150	1 1/2"	3.66	2.80
VCSL1-050	1/2"	2.24	1.36	VCSL1-200	2"	3.94	3.43
VCSL1-075	3/4"	2.52	1.63	VCSL1-250	2 1/2"	4.72	4.72
VCSL1-100	1"	2.95	1.89	VCSL1-300	3"	5.51	5.51

### Materials List

Description	Material
Body	SS 316 (CF8M)
Cap	SS 316 (CF8M)
Stem	SS 316/SS 304
Gasket	PTFE

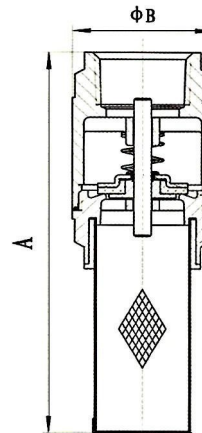
## Stainless Steel Vertical Spring-Assisted Check Valve – “Foot Valve”

### Features

- S.S. 316 Investment cast body
- ANSI Class 150 lb.
- Paired with an all stainless-steel filter
- Suitable for full range of liquids and gas
- Temperature range: -40°F to 400°F
- 100% individually tested
- NPT threaded ends to ANSI B1.20.1

### Dimensions:

Part #	Size	A	B
VFS01-025	1/4"	3.10	1.18
VFS01-038	3/8"	3.58	1.36
VFS01-050	1/2"	3.76	1.36
VFS01-075	3/4"	4.45	1.63
VFS01-100	1"	5.20	1.89
VFS01-125	1 1/4"	5.75	2.38
VFS01-150	1 1/2"	6.54	2.80
VFS01-200	2"	7.36	3.43
VFS01-250	2 1/2"	8.98	4.72
VFS01-300	3"	5.51	5.51



### Materials List

Description	Material
Body	SS 316 (CF8M)
Bonnet	SS316 (CF8M)
Stem	SS 304/SS 316
Filter	SS 304

• Information provided here may change without notification

• Other sizes are available by special order

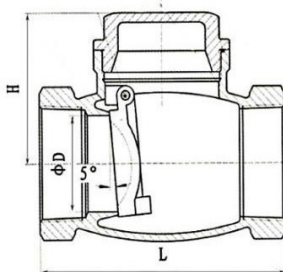
⚠ \* California Prop 65 WARNING: This product can expose you to chemicals such as DEHP, which is known to the State of California to cause cancer, birth defects or reproductive harm.



## Stainless Steel Swing Check Valve (SS316)

### Features

- S.S. 316 investment castbody
- Working pressure of 200 PSI (WOG)
- Suitable for full range of liquids and gas (WOG)
- Temperature range: -40°F to 400°F
- 100% individually tested
- NPT threaded ends to ANSI B1.20.1



### Dimensions

Part #	Size	D	L	H
VCS01-1050	1/2"	0.59	2.56	1.69
VCS01-075	3/4"	0.79	3.15	2.09
VCS01-100	1"	0.98	3.54	2.36
VCS01-125	1 1/4"	1.26	4.13	2.36
VCS01-150	1 1/2"	1.50	4.72	2.95
VCS01-200	2"	1.97	5.51	3.11

### Materials List

Description	Material
Body	SS 316 (CF8M)
Bonnet	SS 316 (CF8M)
Disc	SS316 (CF8M)
Hanger Pin	SS 304
Plug	SS 304
Plug Gasket	PTFE
Gasket	PTFE

- Information provided here may change without notification
- Other sizes are available by special order

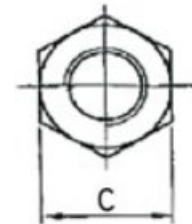
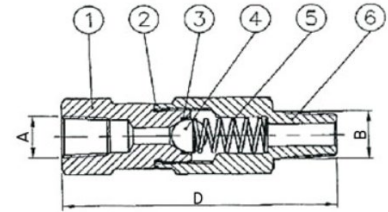
## High Pressure Inline Check Valves

### Features

- MNPT by FNPT Threaded Ends
- 6,000 PSI rated
- 316 Stainless Steel Body
- Cracking pressure 8PSI-10PSI

### Materials List

Description	Material
Body Inlet	SS316
Spring	SS304
Ball	SS304
O-Ring	Viton
Packing	SS316
Body Outlet	SS316



### Dimensions

Part #	Size	A	B	C	L	CV
VCSL6K-025	1/4"	0.26	0.24	0.75	2.92	1.2
VCSL6K-038	3/8"	0.39	0.37	0.75	2.92	1.4
VCSL6K-050	1/2"	0.55	0.5	1.06	2.97	1.5
VCSL6K-075	3/4"	0.8	0.75	1.26	3.33	1.8
VCSL6K-100	1"	0.99	0.99	1.26	3.33	1.8



# Brass Valves

Brass  
Valves

sales@durachoice.com    www.DuraChoice.com    1-800-540-3050    Fax: 1-214-988-1006

## Brass Ball Valves – Full Port

FxF NPT Threaded 600 WOG

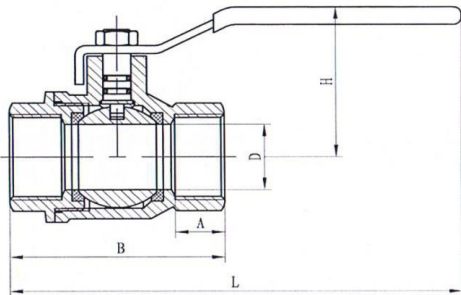
### Features:

- Working pressure of 600 PSI (WOG); 150 Saturated Steam
- ISO 9001 Manufacturer
- Chrome-plated brass ball
- Working temperature: -4°F to 300°F
- Suitable for full range of liquids and gas
- Full port construction for optimal flow and tight, leak-proof shutoff
- Fast 1/4 turn opening and closing operation
- Bidirectional flow control
- Each valve individually tested
- Blowout-proof stem
- NPT Threaded ends to ANSI B1.20.1
- Blue vinyl insulator on a heavy-duty plated steel handle



### Dimensions

Part #	Size	A	B	D	L	H	HoS
VBB01-025	1/4"	0.39	1.62	0.31	4.13	1.33	0.75
VBB01-038	3/8"	0.42	1.65	0.38	4.02	1.56	0.86
VBB01-050	1/2"	0.52	1.84	0.54	4.47	1.96	0.99
VBB01-075	3/4"	0.55	2.20	0.75	5.05	2.12	1.26
VBB01-100	1"	0.73	2.76	0.96	5.77	2.37	1.50
VBB01-125	1 1/4"	0.73	3.13	1.20	6.30	2.92	1.89
VBB01-150	1 1/2"	0.73	3.50	1.50	8.10	3.50	2.13
VBB01-200	2"	0.76	4.07	1.87	8.35	3.70	2.56
VBB01-250	2 1/2"	1.14	5.33	2.32	11.65	4.75	3.25
VBB01-300	3"	1.28	6.25	2.87	11.50	4.57	3.70
VBB01-400	4"	1.50	7.15	3.64	12.75	5.93	4.76



### Materials List:

Description	Material
Body	Brass*
Ball	Chrome-plated brass
Stem	Brass
Seats	PTFE
Gaskets	PTFE
Handle	Steel
Handle Cover	Rubber

- ❖ Information provided here may change without notification
- ❖ Other sizes and range are available on special order

▲ \* California Prop 65 WARNING: This product can expose you to chemicals such as lead, which is known to the State of California to cause cancer, birth defects or reproductive harm.

## Brass Ball Valves – Full Port - Generic

FxF NPT Threaded 600 WOG

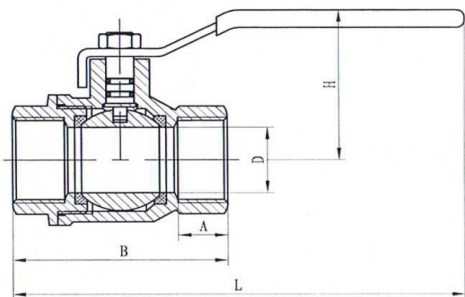
### Features:

- Working pressure of 600 PSI (WOG); 150 Saturated Steam
- ISO 9001 Manufacturer
- Chrome-plated brass ball
- Working temperature: -4°F to 300°F
- Suitable for full range of liquids and gas
- Full port construction for optimal flow and tight, leak-proof shutoff
- Fast 1/4 turn opening and closing operation
- Bidirectional flow control
- Each valve individually tested
- Blowout-proof stem
- NPT Threaded ends to ANSI B1.20.1
- Red vinyl insulator on a heavy-duty plated steel handle



### Dimensions

Part #	Size	A	B	D	L	H	HoS
VBB01G-025	1/4"	0.39	1.62	0.31	4.13	1.33	0.75
VBB01G-038	3/8"	0.42	1.65	0.38	4.02	1.56	0.86
VBB01G-050	1/2"	0.52	1.84	0.54	4.47	1.96	0.99
VBB01G-075	3/4"	0.55	2.20	0.75	5.05	2.12	1.26
VBB01G-100	1"	0.73	2.76	0.96	5.77	2.37	1.50
VBB01G-125	1 1/4"	0.73	3.13	1.20	6.30	2.92	1.89
VBB01G-150	1 1/2"	0.73	3.50	1.50	8.10	3.50	2.13
VBB01G-200	2"	0.76	4.07	1.87	8.35	3.70	2.56
VBB01G-250	2 1/2"	1.14	5.33	2.32	11.65	4.75	3.25
VBB01G-300	3"	1.28	6.25	2.87	11.50	4.57	3.70
VBB01G-400	4"	1.50	7.15	3.64	12.75	5.93	4.76



### Materials List:

Description	Material
Body	Brass*
Ball	Chrome-plated brass
Stem	Brass
Seats	PTFE
Gaskets	PTFE
Handle	Steel
Handle Cover	Rubber

- ❖ Information provided here may change without notification
- ❖ Other sizes and range are available on special order

⚠ \* California Prop 65 WARNING: This product can expose you to chemicals such as lead, which is known to the State of California to cause cancer, birth defects or reproductive harm.



## Lead-Free Brass Ball Valves – CSA, UL, UPC and FM Certified

Full Port with Stainless Steel Ball (optional locking handle)

### Features:

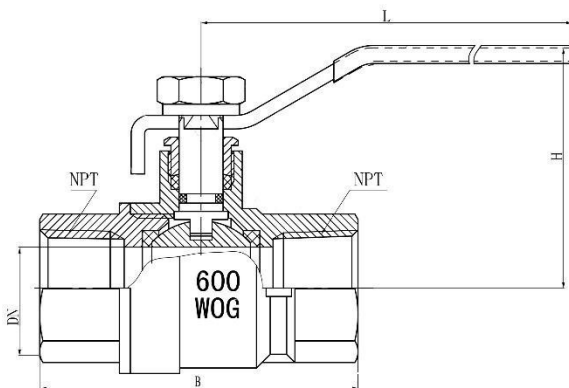
- Lead free brass C87600; UL Listed and CSA, FM and UPC certified
- Working pressure of 600 PSI (WOG); 150 Saturated Steam
- Minimum pressure drop due to large full portsize
- ISO 9001 Manufacturer
- Stainless Steel 304 ball
- Working temperature: -4°F to 149°F
- Suitable for full range of liquids and gas
- Fast 1/4 turn opening and closing operation
- Bidirectional flow control
- Blowout-proof stem
- NPT Threaded ends to ANSI B1.20.1
- Blue vinyl insulator on a plated steel handle
- Optional locking handle (VBB02LH)



### Dimensions

Part #	Size	B	D	L	H	Part #	H
VBB02-025	1/4"	1.73	0.39	3.35	1.69	VBB02LH-025	2.15
VBB02-038	3/8"	1.73	0.39	3.35	1.69	VBB02LH-038	2.15
VBB02-050	1/2"	2.28	0.59	3.35	1.81	VBB02LH-050	2.27
VBB02-075	3/4"	2.52	0.75	4.29	2.36	VBB02LH-075	2.94
VBB02-100	1"	2.97	0.99	4.29	2.52	VBB02LH-100	3.05
VBB02-125	1 1/4"	3.44	1.26	5.63	2.52	VBB02LH-125	3.26
VBB02-150	1 1/2"	3.88	1.57	5.63	2.72	VBB02LH-150	3.55
VBB02-200	2"	4.29	1.97	5.63	3.03	VBB02LH-200	3.74

**Note:** The handle height (H) differs slightly between the locking and non-locking versions of this valve. See above chart.



\* Lead Free refers to the wetted surface of pipe, fittings and fixtures in potable water systems that have weighted average lead content  $\leq 0.25\%$  per the Safe Drinking Water Act (Sec. 1417) amended 1-4-2011 and other equivalent state regulations.

- Information provided here may change without notification
- Other sizes are available by special order

### Materials List:

Description	Material
Body/ End Cap	Lead Free Brass C87600*
Ball	Stainless Steel 304
Stem	Brass
Seats	PTFE
Gaskets	PTFE
Handle and Nut	Plated Steel
Handle Cover	Rubber
Ball Packing	PTFE
O-Ring	NBR
Locking Washer	Plated Steel
Packing Nut	Brass

⚠ \* California Prop 65 WARNING: This product can expose you to chemicals such as DEHP, which is known to the State of California to cause cancer, birth defects or reproductive harm.

## Brass Ball Valves – Standard Port

FxF NPT Threaded 400 WOG

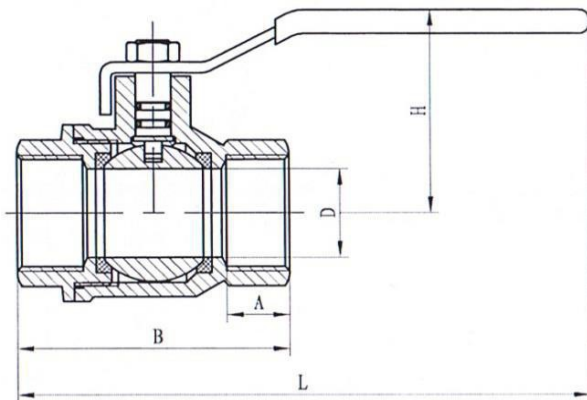
### Features:

- Working pressure of 400 PSI (WOG); 120 Saturated Steam
- Chrome-plated brass ball
- ISO 9001 Manufacturer
- Working temperature: -4°F to 300°F
- Suitable for full range of liquids and gas
- Fast 1/4 turn opening and closing operation
- Bidirectional flow control
- Each valve individually tested
- Blowout-proof stem
- NPT Threaded ends to ANSI B1.20.1



### Dimensions

Part #	Size	A	B	D	L	H
VBB03-025	1/4"	0.11	0.54	0.21	1.21	0.46
VBB03-038	3/8"	0.16	0.81	0.31	1.81	0.69
VBB03-050	1/2"	0.21	0.08	0.42	2.42	0.91
VBB03-075	3/4"	0.32	1.61	0.62	3.62	1.37
VBB03-100	1"	0.42	2.15	0.83	4.83	1.83
VBB03-125	1 1/4"	0.53	0.19	1.04	6.04	2.28
VBB03-150	1 1/2"	0.63	3.23	1.25	7.25	2.74
VBB03-200	2"	0.84	4.31	1.67	9.67	3.65
VBB03-250	2 1/2"	1.05	5.38	2.08	12.08	4.57
VBB03-300	3"	1.26	6.46	2.50	14.50	5.48
VBB03-400	4"	1.68	8.61	3.33	19.33	7.31



### Materials List

Description	Material
Body	Brass*
Ball	Chrome-plated brass
Stem	Brass
Seats	PTFE
Gaskets	PTFE
Handle	Steel
Handle Cover	Rubber

⚠ \* California Prop 65 WARNING: This product can expose you to chemicals such as lead, which is known to the State of California to cause cancer, birth defects or reproductive harm.

## Brass Ball Valves – Standard Port – Generic

FxF NPT Threaded 400 WOG

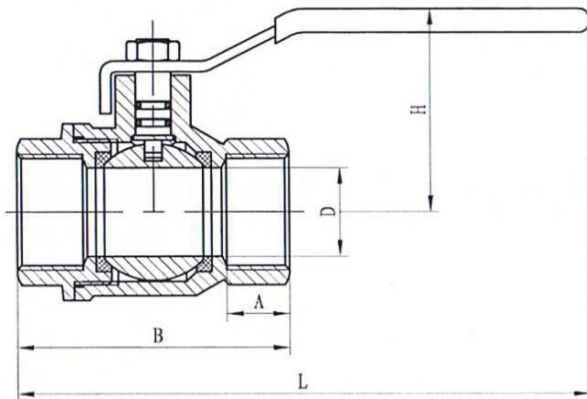
### Features:

- Working pressure of 400 PSI (WOG); 120 Saturated Steam
- Chrome-plated brass ball
- ISO 9001 Manufacturer
- Working temperature: -4°F to 300°F
- Suitable for full range of liquids and gas
- Fast 1/4 turn opening and closing operation
- Bidirectional flow control
- Each valve individually tested
- Blowout-proof stem
- NPT Threaded ends to ANSI B1.20.1



### Dimensions

Part #	Size	A	B	D	L	H
VBB03-025	1/4"	0.11	0.54	0.21	1.21	0.46
VBB03-038	3/8"	0.16	0.81	0.31	1.81	0.69
VBB03-050	1/2"	0.21	0.08	0.42	2.42	0.91
VBB03-075	3/4"	0.32	1.61	0.62	3.62	1.37
VBB03-100	1"	0.42	2.15	0.83	4.83	1.83
VBB03-125	1 1/4"	0.53	0.19	1.04	6.04	2.28
VBB03-150	1 1/2"	0.63	3.23	1.25	7.25	2.74
VBB03-200	2"	0.84	4.31	1.67	9.67	3.65
VBB03-250	2 1/2"	1.05	5.38	2.08	12.08	4.57
VBB03-300	3"	1.26	6.46	2.50	14.50	5.48
VBB03-400	4"	1.68	8.61	3.33	19.33	7.31



### Materials List

Description	Material
Body	Brass*
Ball	Chrome-plated brass
Stem	Brass
Seats	PTFE
Gaskets	PTFE
Handle	Steel
Handle Cover	Rubber

⚠ \* California Prop 65 WARNING: This product can expose you to chemicals such as lead, which is known to the State of California to cause cancer, birth defects or reproductive harm.

## Gas Ball Valve Series

### Brass Gas Ball Valve — Female x Female

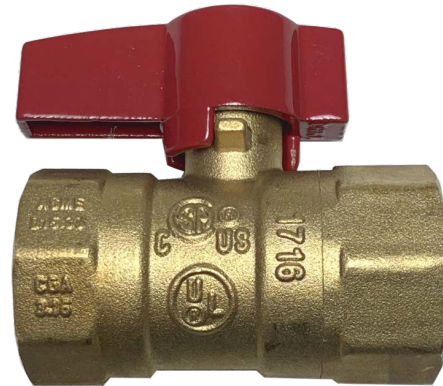


#### FEATURES

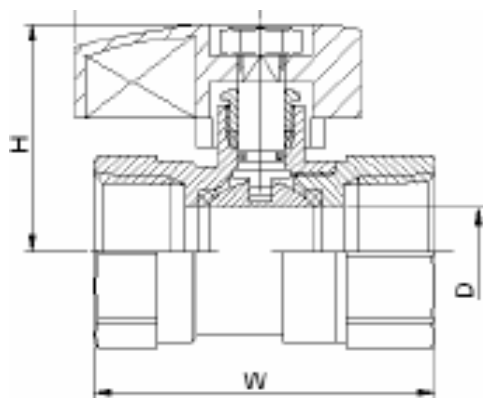
- NPT Thread conform ANSI B1.20.1
- Construction: Forging Brass Body
- PTFE Ball Seats
- ISO9001:2015
- Blow Out Proof Brass Stem
- O-RING & PTFE Seal On The Seal
- Aluminum Alloy 1/4 Turn Handle
- Good for Gas line and other Applications

#### PERFORMANCE RATING

600 PSI (WOG) 175 PSI (GAS) Service  
Temperature Range : -4° F to 149° F



NAME	MATERIAL
Ball Valve Body	Brass
Sealing Washer	PTFE
Handle	Chrome
Stem	NBR
Handle Nut	Brass
Ball Packing	Brass
Ball Valve Cap	Ferrum/ Plated Copper
Ball	PTFE
O-Ring	Al alloy
Packing Nut	Brass



APPROVALS			
<b>CSA:</b>	3/8"-1"	per ANSI Z21.15/CSA 9.1 for 1/2 psig	
	3/8"-1	per ASME B16.44/CR91-001	for 5 psig
	3/8"-1	per ASME B16.33/CGA3.16	for 125 psig
<b>UL:</b>	3/8"-3/4"	UL 125 (Guide YSDT ) 125psig	

DIMENSIONS							
Part No.	SIZE	D	L	H	W	Gas Flow	Wt.(lbs.)
GBV038	3/8	0.394	1.28	1.44	1.752	4.03	0.260
GBV01	1/2	0.394	1.28	1.44	2.204	4.59	0.340
GBV02	3/4	0.591	1.28	1.54	2.362	12.37	0.478
GBV03	1	0.748	1.28	1.72	2.874	21.13	0.767

- Information provided here may change without notification
- Other sizes are available by special order

⚠ \* California Prop 65 WARNING: This product can expose you to chemicals such as lead, which is known to the State of California to cause cancer, birth defects or reproductive harm.

## Nickel-Plated Brass Ball Valves

Full (VBBN1), Standard Port (VBBN3)

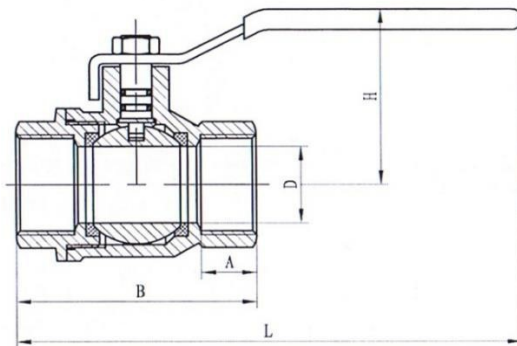
### Features:

- Nickel-plated brass body – for extra strength and corrosion resistance
- Working pressure of 600 PSI(VBBN1) or 400 PSI (VBBN3)
- Chrome-plated brass ball
- Suitable for full range of liquids and gas (WOG)
- Fast 1/4 turn opening and closing operation
- Flow can go in either direction
- Blowout-proof stem
- NPT Threaded ends to ANSI B1.20.1
- Blue vinyl insulator on a heavy-duty plated steel handle



### Dimensions

Part #	Size	Port	A	B	D	L	H	HoS
VBBN1-025	1/4"	Full	0.39	1.71	0.25	4.74	1.46	0.75
VBBN1-038	3/8"	Full	0.42	1.80	0.38	4.78	1.56	0.86
VBBN1-050	1/2"	Full	0.45	1.93	0.50	4.86	1.70	0.99
VBBN1-075	3/4"	Full	0.55	2.42	0.75	5.10	1.83	1.26
VBBN1-100	1"	Full	0.55	2.58	0.96	6.14	2.07	1.50
VBBN1-125	1 1/4"	Full	0.65	3.03	1.18	7.89	2.62	1.89
VBBN1-150	1 1/2"	Full	0.67	3.50	1.50	8.15	2.91	2.13
VBBN1-200	2"	Full	0.71	3.94	1.85	8.35	3.09	2.56
VBBN1-250	2 1/2"	Full	0.79	5.04	2.50	12.64	4.94	3.25
VBBN1-300	3"	Full	0.91	5.67	2.95	12.91	5.37	3.70
VBBN1-400	4"	Full	0.98	6.66	3.74	13.39	5.93	4.76
VBBN3-100	1"	Standard	0.55	2.56	0.94	5.25	2.03	1.46
VBBN3-150	1 1/2"	Standard	0.65	3.26	1.38	5.75	2.9	2.13
VBBN3-200	2"	Standard	0.70	3.94	1.93	7.50	3.09	2.64
VBBN3-300	3"	Standard	0.90	5.59	2.76	11.75	5.22	3.66
VBBN3-400	4"	Standard	0.96	6.57	3.35	12.25	5.5	4.84



### Materials List

Description	Material
Body	Nickel-plated brass*
Ball	Chrome-plated brass*
Stem	Brass
Seats	PTFE
Gaskets	PTFE
Handle	Steel
Handle Cover	Rubber

▲ \* California Prop 65 WARNING: This product can expose you to chemicals such as lead, which is known to the State of California to cause cancer, birth defects or reproductive harm.



## Brass Mini-Ball Valves - Chrome Plated

ISO 9001 Manufacturer

### Features:

- Chrome-plated brass body - for extra strength and corrosion resistance
- Working pressure of 200 PSI (WOG)
- Solid chrome-plated brass ball
- NPT threaded ANSI B1.20.1
- Double-seal system allows low in either direction
- Heavy duty Zinc Alloy handles
- Working temperature of 2 F to 175 F
- Fast 1/4 turn opening and closing operation
- Each valve individually tested for maximum safety



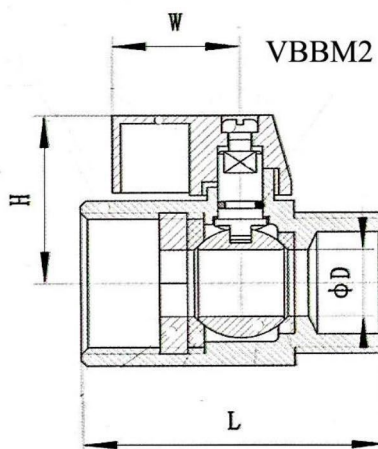
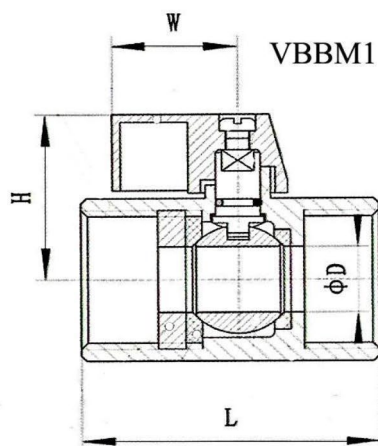
### Dimensions

#### Female x Female

Part #	Size	D	L	H	W
VBBM1-025	1/4"	0.42	1.66	1.04	0.89
VBBM1-038	3/8"	0.57	1.66	1.04	0.89

#### Male x Female

Part #	Size	D	L	H	W
VBBM2-025	1/4"	0.27	1.66	1.04	0.89
VBBM2-038	3/8"	0.46	1.66	1.04	0.89



### Materials List

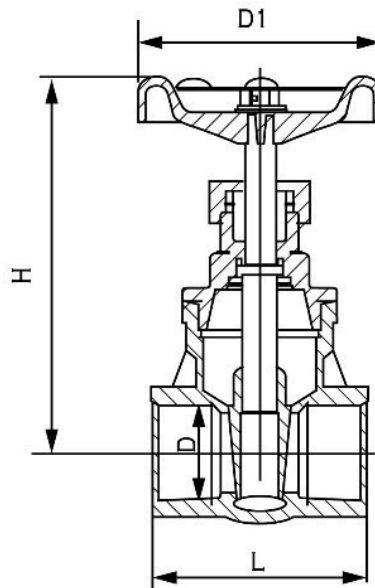
Description	Material
Body	Chrome-plated brass*
Ball	Solid chrome plated brass*
Cap	Brass
Ball Seat	PTFE
Stem	Brass
Bolt	Brass
Lever	Zinc Alloy

⚠ \* California Prop 65 WARNING: This product can expose you to chemicals such as lead, which is known to the State of California to cause cancer, birth defects or reproductive harm.

## Brass Gate Valves

### Features:

- Brass forged body with a cast iron handle
- Working pressure of 200 PSI (WOG); 125 WSP
- Non-rising stem
- Suitable for full range of liquids and gas
- Flow can go in either direction
- Working temperature of 0-300°F
- Each valve individually tested
- NPT Threaded ends to ANSI B1.20.1



### Dimensions

Part #	Size	D1	L	H	D
VGB01-038	3/8"	2.09	1.55	2.68	0.39
VGB01-050	1/2"	1.97	1.77	2.68	0.51
VGB01-075	3/4"	1.97	1.97	2.95	0.59
VGB01-100	1"	2.36	2.28	3.35	0.75
VGB01-125	1-1/4"	2.36	2.48	3.78	1.02
VGB01-150	1-1/2"	3.07	2.60	4.33	1.13
VGB01-200	2"	3.07	2.95	5.12	1.74
VGB01-250	2-1/2"	3.94	2.99	6.54	2.31
VGB01-300	3"	4.21	3.11	7.32	2.82
VGB01-400	4"	5.12	4.25	8.27	3.84

### Materials List

Description	Material
Body	Brass*
Bonnet	Forged brass*
Stem	Brass*
Stop Ring	Brass*
Packing	NBR
Hand Wheel Nut	SS 41
Hand Wheel	Cast iron
Packing Nut	Brass*
Ring	Brass*
Lock Nut	Brass*
Disc	Brass*

## Brass Needle Valves, 600 PSI

### Features:

- 1/4" connection sizes
- FxF, MxF, and FxM designs
- Working pressure: 600 psi at 300 F



### Material List

Description	Material
Application	WOG Supply
Pipe Material	Multi-Purpose
Connection	Screw
Features	Adjustable
Indoor/Outdoor	Indoor, Outdoor
Material	Brass
Valve Type	Needle

### Dimensions

Part #	Size	D	H	W
VNB02-025	1/4"	2.115	0.42	1.63
VNB01-025	1/4"	2.153	0.45	1.61

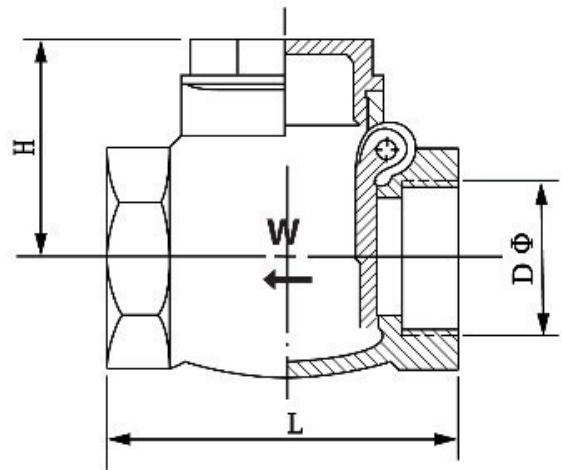
## Forged Brass Swing Check Valve – Hard Seat Swing IPS

### Features:

- 200 PSI (WOG) / 125 WSP
- Forged Brass\*
- Hard seat swing
- NPT Threaded ends to ANSI B1.20.1
- Each valve individually tested

### Dimensions

Part #	Size	L	H	D
VCB01-050	½"	2.02	1.41	0.49
VCB01-075	¾"	2.06	1.52	0.66
VCB01-100	1"	2.42	1.83	0.82
VCB01-125	1-1/4"	2.38	2.07	1.24
VCB01-150	1-1/2"	3.25	2.34	1.38
VCB01-200	2"	3.73	2.59	1.69
VCB01-300	3"	5.37	3.30	2.56
VCB01-400	4"	6.53	3.96	3.52

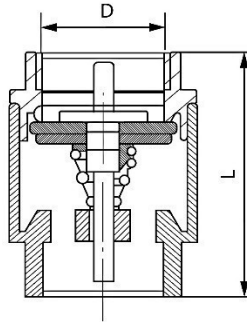


⚠ \* California Prop 65 WARNING: This product can expose you to chemicals such as lead, which is known to the State of California to cause cancer, birth defects or reproductive harm.

## Brass In-Line Spring-Assisted Check Valve – 2 piece body

### Features:

- Working pressure of 200 PSI (WOG)
- Suitable for full range of liquids and gas
- Temperature range: lower than 300°C
- NPT Threaded ends to ANSI B1.20.1



### Dimensions

Part #	Size	D	L
VCBL1-050	1/2"	0.54	1.73
VCBL1-075	3/4"	0.82	1.81
VCBL1-100	1"	1.15	2.13
VCBL1-200	2"	2.18	2.60
VCBL1-300	3"	3.25	3.50
VCBL1-400	4"	4.25	4.50

### Materials List

Description	Material
Body	Brass
Cap	Brass
Stem	Plastics

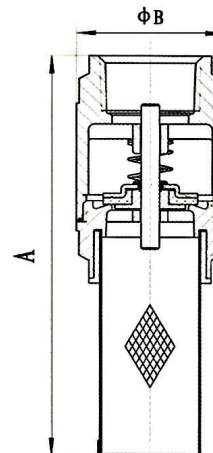
## Brass Vertical Spring-Assisted Check Valves - "Foot Valve"

### Features:

- Working pressure of 200 PSI (WOG)
- Paired with a stainless-steel filter
- Suitable for full range of liquids and gas
- Temperature range: lower than 300°C
- NPT Threaded ends to ANSI B1.20.1

### Dimensions

Part #	Size	B	A
VFB01-050	1/2"	0.54	4.02
VFB01-075	3/4"	0.82	3.59
VFB01-100	1"	1.15	3.75
VFB01-150	1 1/2"	1.70	4.34
VFB01-200	2"	2.18	6.63
VFB01-300	3"	3.25	7.88
VFB01-400	4"	4.25	8.44



### Materials List

Description	Material
Body	Brass
Cap	Brass
Stem	Plastic
Filter	Stainless Steel
Connector	Plastic





# High Pressure Valves

High Pressure  
Valves

[sales@durachoice.com](mailto:sales@durachoice.com) [www.DuraChoice.com](http://www.DuraChoice.com) 1-800-540-3050 Fax: 1-214-988-1006

# High Pressure Stainless Steel (SS316) Ball Valves – Full Port, 6,000 PSI

Seal-welded NACE suitable for oilfield and other high-pressure applications

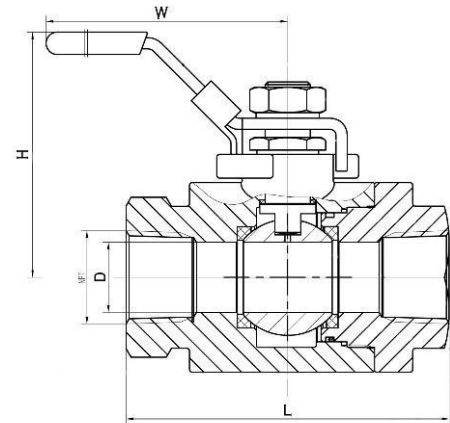
## Features:

- S.S. 316 investment cast, 2-piece seal-welded full port body
- Working pressure of 6,000 PSI (WOG)
- Suitable for full range of liquids and gas
- PEEK seat
- Pressure tested according to API598
- 100% individually tested
- Meets NACE MR0175 standard
- ISO 9001 Standard
- NPT threaded ends
- Heavy duty locking handle with insulator

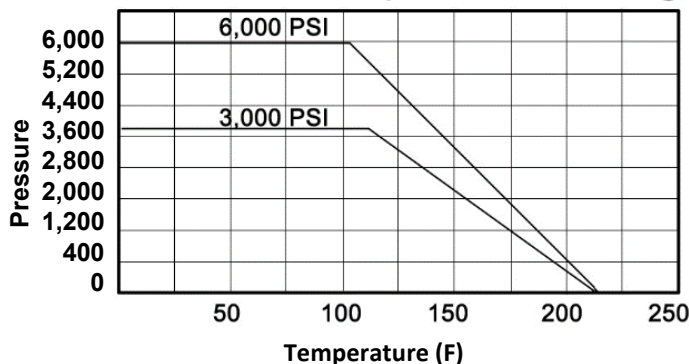


## Dimensions:

Part #	PSI	Size	D	L	H	W
VBS6K-025	6,000	1/4"	0.23	2.99	2.20	4.92
VBS6K-038	6,000	3/8"	0.32	2.99	2.20	4.92
VBS6K-050	6,000	1/2"	0.51	4.02	2.20	4.72
VBS6K-075	6,000	3/4"	0.75	4.25	2.72	6.30
VBS6K-100	6,000	1"	0.99	4.53	3.50	7.95
VBS6K-150	6,000	1 1/2"	1.50	5.24	4.49	9.06
VBS6K-200	6,000	2"	1.89	6.06	4.72	10.24



## Pressure-Temperature Rating



## Materials List:

Designation	Material
Body	SS 316 (CF8M)
Ball	SS316
Cap	SS 316 (CF8M)
Ball Seat	PEEK
Thrust Washer	RPTFE
Stem	SS 316
Gland Nut	A194 Gr. 8
Stem Nut	A194 Gr. 8
Handle	SS 304
Handle Nut	A194 Gr.8
Handle Lock	SS 304
Handle Cover	Plastic

- ❖ Information provided here may change without notification
- ❖ Other sizes and range are available on special order

⚠ \* California Prop 65 WARNING: This product can expose you to chemicals such as lead, which is known to the State of California to cause cancer, birth defects or reproductive harm.

# High Pressure Stainless Steel (SS316) Ball Valves – Full Port, 3,600 PSI

Seal-welded NACE suitable for oilfield and other high-pressure applications

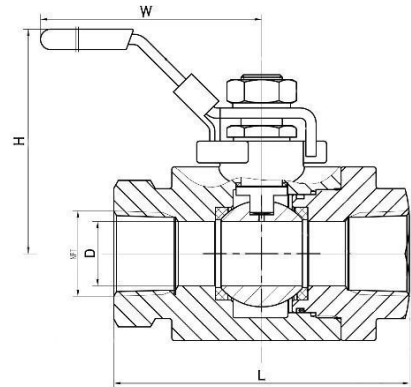
## Features:

- S.S. 316 investment cast, 2-piece seal-welded full port body
- Working pressure of 3,600 PSI (WOG)
- Suitable for full range of liquids and gas
- DELRIN seat
- Pressure tested according to API598
- 100% individually tested
- Meets NACE MR0175 standard
- ISO 9001 Standard
- NPT threaded ends
- Heavy duty locking handle with insulator

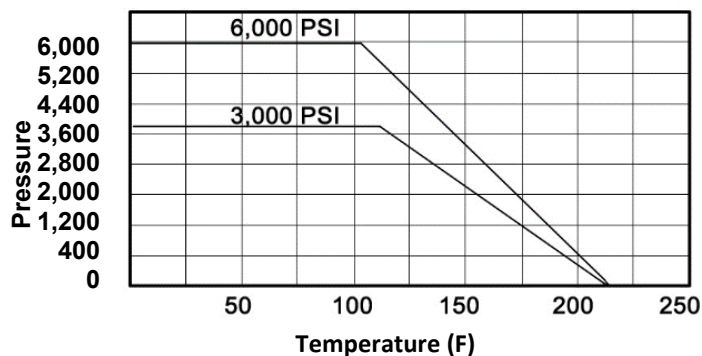


## Dimensions:

Part #	PSI	Size	D	L	H	W
VBS3K-025	3,600	1/4"	0.23	2.99	2.20	4.92
VBS3K-038	3,600	3/8"	0.32	2.99	2.20	4.92
VBS3K-050	3,600	1/2"	0.51	4.02	2.20	4.72
VBS3K-075	3,600	3/4"	0.75	4.25	2.72	6.30
VBS3K-100	3,600	1"	0.99	4.53	3.50	7.95
VBS3K-150	3,600	1 1/2"	1.50	5.24	4.49	9.06
VBS3K-200	3,600	2"	1.89	6.06	4.72	10.24



## Pressure-Temperature Rating



- ❖ Information provided here may change without notification
- ❖ Other sizes and range are available on special order

## Materials List:

Designation	Material
Body	SS 316 (CF8M)
Ball	SS316
Cap	SS 316 (CF8M)
Ball Seat	DELRIN
Thrust Washer	RPTFE
Stem	SS 316
Gland Nut	A194 Gr. 8
Stem Nut	A194 Gr. 8
Handle	SS 304
Handle Nut	A194 Gr. 8
Handle Lock	SS 304
Handle Cover	Plastic

## Full Port Stainless Steel (SS316) Ball Valve – 2,000 PSI

Seal-welded NACE suitable for oilfield and other high-pressure applications

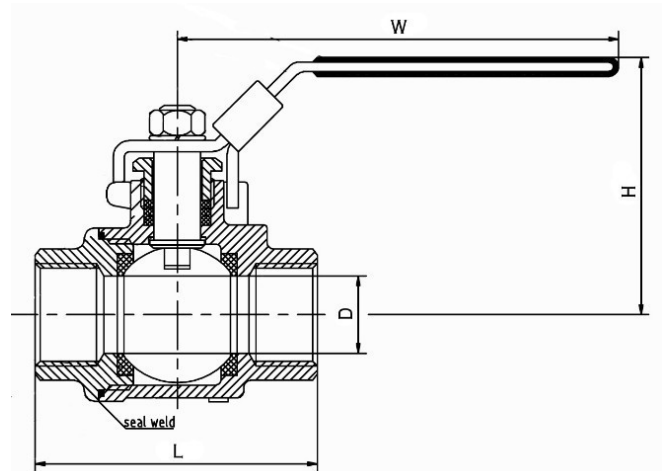
### Features:

- S.S. 316 investment cast
- 2-piece seal-welded full port body design
- Working pressure of 2,000 PSI (WOG)
- Suitable for full range of liquids and gas
- Seal welded
- Low operation torque
- 100% individually tested
- Blowout-proof stem
- NPT threaded ends to ANSI B1.20.1
- Meets NACE MR0175 standard
- ISO 9001 Standard
- Heavy duty locking handle with insulator



### Materials List:

Designation	Material
Body	SS 316 (CF8M)
Ball	SS 304
Cap	SS 316 (CF8M)
Ball Seat	RPTFE
Thrust Washer	RPTFE
Stem Packing	PTFE
Stem	SS 304
Gland Nut	SS 304
Handle Washer	SS 304
Handle Nut	A2-70
Handle	SS 201
Handle Lock	SS 201
Handle Cover	Plastic



### Dimensions:

Part #	Size	D	L	H	W
VBS2KF-025	1/4"	0.43	2.16	2.09	3.90
VBS2KF-038	3/8"	0.47	2.16	2.09	3.90
VBS2KF-050	1/2"	0.59	2.41	2.28	4.13
VBS2KF-075	3/4"	0.79	2.84	2.48	4.68
VBS2KF-100	1"	0.98	3.54	2.80	5.51
VBS2KF-125	1 1/4"	1.26	4.01	3.07	5.79
VBS2KF-150	1 1/2"	1.49	4.65	3.62	6.77
VBS2KF-200	2"	1.89	5.35	3.94	8.27

- ❖ Information provided here may change without notification
- ❖ Other sizes and range are available on special order

⚠ \* California Prop 65 WARNING: This product can expose you to chemicals such as lead, which is known to the State of California to cause cancer, birth defects or reproductive harm.

## Standard Port Stainless Steel Ball Valve (SS316) – 2,000 PSI

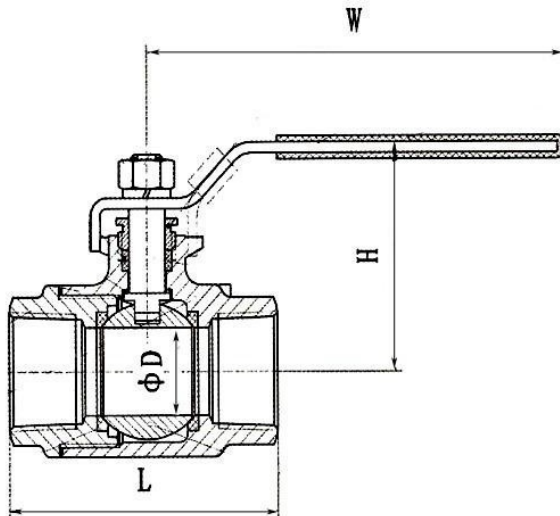
### Features:

- S.S. 316 investment cast standard portbody
- Working pressure of 2,000 PSI (WOG)
- Suitable for full range of liquids and gas
- Pure PTFE seals and seats
- Low operation torque
- 100% individually tested
- Blowout-proof stem
- Female x Female NPT threaded ends to ANSI B1.20.1
- Heavy duty locking handles with blue vinyl insulator
- Temperature range: -60°F to 450°F



### Dimensions:

Part #	Size	D	L	H	W
VBS2K-025	1/4"	0.36	2.13	1.65	4.17
VBS2K-038	3/8"	0.36	2.13	1.65	4.17
VBS2K-050	1/2"	0.49	2.40	1.81	4.17
VBS2K-075	3/4"	0.59	2.80	2.09	5.79
VBS2K-100	1"	0.79	3.35	2.28	5.83
VBS2K-125	1 1/4"	0.98	3.58	2.68	7.60
VBS2K-150	1 1/2"	1.26	4.02	2.83	7.60
VBS2K-200	2"	1.50	4.65	3.07	7.60



### Materials List:

Designation	Material
Body	SS 316 (CF8M)
Ball	SS 316 (CF8M)
Cap	SS 316 (CF8M)
Seat	RPTFE
Thrust Washer	SS 304
Stem Packing	PTFE
Stem Seal	PTFE
Body Seal	PTFE
Gland Nut	SS 304
Stem Nut	SS 304
Handle	SS 304
Handle Cover	Plastic

- Information provided here may change without notification
- Other sizes are available by special order

⚠ \* California Prop 65 WARNING: This product can expose you to chemicals such as lead, which is known to the State of California to cause cancer, birth defects or reproductive harm.



## High Pressure Carbon Steel (WCB) Ball Valves – Full Port, 6,000 PSI

Seal-welded NACE suitable for oilfield and other high-pressure applications

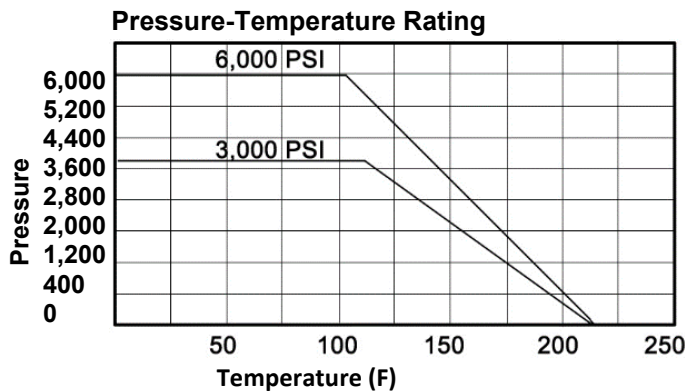
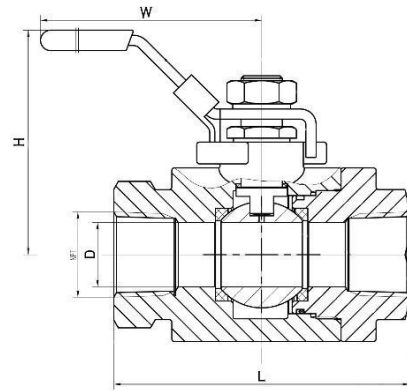
### Features:

- 2-piece seal-welded cast carbon steel full port design
- Working pressure of 6,000 PSI (WOG)
- Suitable for full range of liquids and gas
- PEEK seat
- Pressure tested according to API598
- 100% individually tested
- Meets NACE MR0175 standard
- ISO 9001 standard
- NPT threaded ends
- Heavy duty locking handle with insulator



### Dimensions:

Part #	PSI	Size	D	L	H	W
VBC6K-025	6,000	1/4"	0.23	2.99	2.20	4.92
VBC6K-038	6,000	3/8"	0.32	2.99	2.20	4.92
VBC6K-050	6,000	1/2"	0.51	4.02	2.20	4.72
VBC6K-075	6,000	3/4"	0.75	4.25	2.72	6.30
VBC6K-100	6,000	1"	0.99	4.53	3.50	7.95
VBC6K-150	6,000	1 1/2"	1.50	5.24	4.49	9.06
VBC6K-200	6,000	2"	1.89	6.06	4.72	10.24



### Materials List:

Designation	Material
Body	WCB
Ball	SS 316
Cap	WCB
Ball Seat	PEEK
Thrust Washer	RPTFE
Stem	SS 316
Gland Nut	A194 Gr. 8
Stem Nut	A194 Gr. 8
Handle	SS 304
Handle Nut	A194 Gr.8
Handle Lock	SS 304
Handle Cover	Plastic

- ❖ Information provided here may change without notification
- ❖ Other sizes are available by special order

⚠ \* California Prop 65 WARNING: This product can expose you to chemicals such as lead, which is known to the State of California to cause cancer, birth defects or reproductive harm.

## High Pressure Carbon Steel (WCB) Ball Valves – 3,600 PSI

Seal-welded NACE suitable for oilfield and other high pressure applications

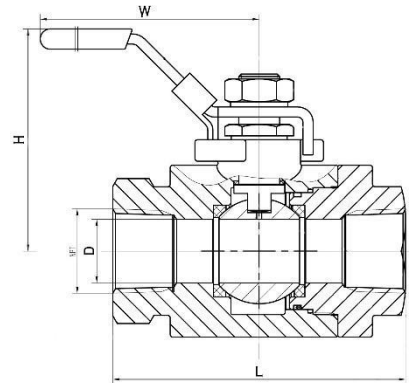
### Features:

- 2-piece seal-welded cast carbon steel full port design
- Working pressure of 3,600 PSI (WOG)
- Suitable for full range of liquids and gas
- DELRIN seat
- Pressure tested according to API598
- 100% individually tested
- Meets NACE MR0175 standard
- ISO 9001 standard
- NPT threaded ends
- Heavy duty locking handle with insulator

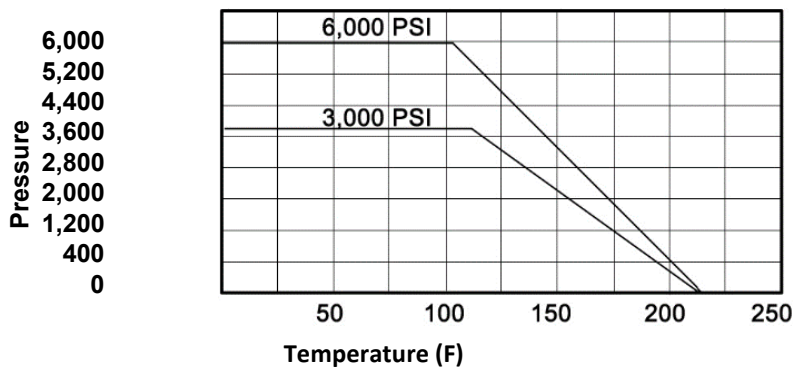


### Dimensions:

Part #	PSI	Size	D	L	H	W
VBC3K-025	3,600	1/4"	0.23	2.99	2.20	4.92
VBC3K-038	3,600	3/8"	0.32	2.99	2.20	4.92
VBC3K-050	3,600	1/2"	0.51	4.02	2.20	4.72
VBC3K-075	3,600	3/4"	0.75	4.25	2.72	6.30
VBC3K-100	3,600	1"	0.99	4.53	3.50	7.95
VBC3K-150	3,600	1 1/2"	1.50	5.24	4.49	9.06
VBC3K-200	3,600	2"	1.89	6.06	4.72	10.24



### Pressure-Temperature Rating



### Materials List:

Designation	Material
Body	WCB
Ball	SS 316
Cap	WCB
Ball Seat	DELRIN
Thrust Washer	RPTFE
Stem	SS 316
Gland Nut	A194 Gr. 8
Stem Nut	A194 Gr. 8
Handle	SS 304
Handle Nut	A194 Gr.8
Handle Lock	SS 304
Handle Cover	Plastic

- Information provided here may change without notification
- Other sizes are available by special order

⚠ \* California Prop 65 WARNING: This product can expose you to chemicals such as lead, which is known to the State of California to cause cancer, birth defects or reproductive harm.

## Full Port Carbon Steel (WCB) Ball Valves – 2,000 PSI

Seal-welded NACE suitable for oilfield and other high pressure applications

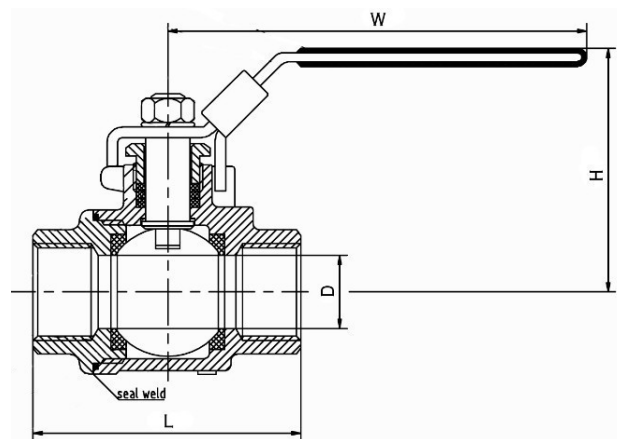
### Features:

- 2-piece seal-welded cast carbon steel full port body design
- Working pressure of 2,000 PSI (WOG)
- Suitable for full range of liquids and gas
- Seal welded
- Low operation torque
- 100% individually tested
- Blowout-proof stem
- NPT threaded ends to ANSI B1.20.1
- Meets NACE MR0175 standard
- ISO 9001 standard
- Heavy duty locking handle with insulator

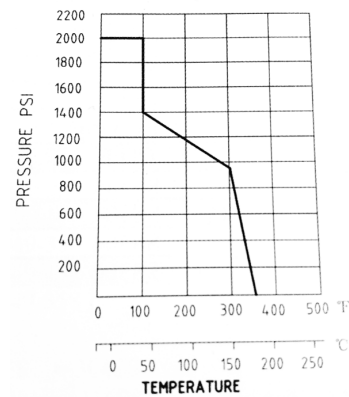


### Dimensions:

Part #	Size	D	L	H	W
VBC2KF-025	1/4"	0.43	2.16	2.09	3.9
VBC2KF-038	3/8"	0.47	2.16	2.09	3.9
VBC2KF-050	1/2"	0.59	2.41	2.28	4.13
VBC2KF-075	3/4"	0.79	2.84	2.48	4.68
VBC2KF-100	1"	0.98	3.54	2.8	5.51
VBC2KF-125	1 1/4"	1.26	4.01	3.07	5.79
VBC2KF-150	1 1/2"	1.49	4.65	3.62	6.77
VBC2KF-200	2"	1.89	5.35	3.94	8.27



PRESSURE-TEMPERATURE  
RATING



### Materials List:

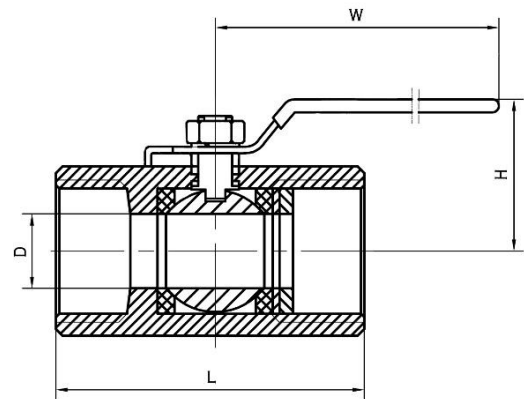
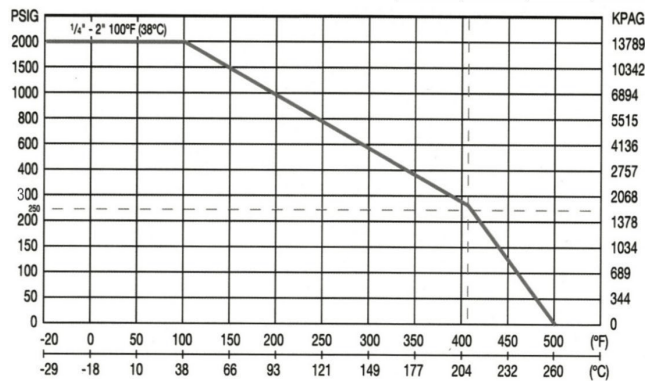
Designation	Material
Body	WCB
Ball	SS 304
Cap	WCB
Ball Seat	RPTFE
Thrust Washer	RPTFE
Stem Packing	PTFE
Stem	SS 304
Gland Nut	SS 304
Handle Washer	SS 304
Handle Nut	A2-70
Handle	SS 201
Handle Lock	SS 201
Handle Cover	Plastic

## Standard Port Carbon Steel (WCB) Ball Valves – 2,000 PSI

Hex-bar stock suitable for oilfield and other high-pressure applications

### Features:

- Wrought carbon standard port body design
- Working pressure of 2,000 PSI (WOG)
- Suitable for full range of liquids and gas
- Low operation torque
- 100% individually tested
- Blowout-proof stem
- NPT threaded ends to ANSI B1.20.1
- Heavy duty locking handle with insulator
- Meets NACE MR0175 standard
- ISO 9001 standard



### Materials List:

Designation	Material
Body	A105
Ball	SS 304
Cap	A105
Cap Seat	RPTFE
Ball Seat	RPTFE
Thrust Washer	PTFE
Stem Packing	PTFE
Stem	SS 304
Gland Nut	SS 304
Handle Washer	SS 304
Handle Nut	A2-70
Handle	SS 201
Handle Cover	Plastic

### Dimensions:

Part #	Size	D	L	H	W
VBC2KRH-025	1/4"	0.2	1.69	1.26	3.14
VBC2KRH-038	3/8"	0.28	1.85	1.38	3.14
VBC2KRH-050	1/2"	0.39	2.46	2.2	3.14
VBC2KRH-075	3/4"	0.51	2.76	2.44	3.54
VBC2KRH-100	1"	0.59	3.39	2.56	3.93
VBC2KRH-125	1 1/4"	0.79	3.7	2.95	4.92
VBC2KRH-150	1 1/2"	0.98	4.02	3.07	5.51
VBC2KRH-200	2"	1.25	4.52	3.54	7.87

- Information provided here may change without notification
- Other sizes are available by special order

⚠ \* California Prop 65 WARNING: This product can expose you to chemicals such as lead, which is known to the State of California to cause cancer, birth defects or reproductive harm.

## Cross Tee Fitting W/ FxF Ends

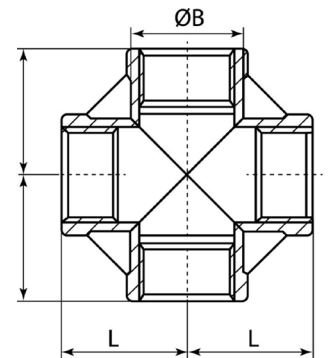
### Features

- Connection: NPT-NPT-NPT-NPT
- Easy and convenient to install
- Shape: 4 Way Connector
- Fittings: FxFxFxF
- Durable Stainless 304, cross shaped, 4 ways, equal female thread
- 



### Dimensions

Part # SS 304	Size	Part # SS 316	Size	OB	L
F104-0125	1/8"	F106-0125	1/8"	0.69	1.38
F104-025	1/4"	F106-025	1/4"	0.69	1.38
F104-0375	3/8"	F106-0375	3/8"	0.81	1.62
F104-050	1/2"	F106-050	1/2"	0.87	1.74
F104-075	3/4"	F106-075	3/4"	1.00	2.00
F104-100	1"	F106-100	1"	1.12	2.24
F104-125	1-1/4"	F106-125	1-1/4"	1.31	2.62
F104-150	1-1/2"	F106-150	1-1/2"	1.43	2.86
F104-200	2"	F106-200	2"	1.62	3.24





## FxF NPT Threaded Coupling

### Features

- Cast pipe fitting size: coupling NPT female 1/2 inch; length: 30 mm
- Temperature rating: -20 to 460 PSI
- Working Pressure: 0-360 PSI
- Pressure rating: Class 150
- Pipe fitting coupling material: made of stainless steel 304 for strength



### Dimensions

Part # SS 304	Size	Part # SS 316	Size	OB	L
F84-0125	1/8"	F86-0125	1/8"	0.75	1.00
F84-025	1/4"	F86-025	1/4"	0.84	1.00
F84-0375	3/8"	F86-0375	3/8"	1.01	1.12
F84-050	1/2"	F86-050	1/2"	1.20	1.38
F84-075	3/4"	F86-075	3/4"	1.46	1.50
F84-100	1"	F86-100	1"	1.77	1.62
F84-125	1-1/4"	F86-125	1-1/4"	2.15	2.00
F84-150	1-1/2"	F86-150	1-1/2"	2.43	2.12
F84-200	2"	F86-200	2"	2.96	2.50
F84-250	2-1/2"	F86-250	2-1/2"	3.31	2.87
F84-300	3"	F86-300	3"	4.00	3.18
F84-400	4"	F86-400	4"	5.06	3.68

## Terms of Sale to Qualified Distributors

### **PAYMENT TERMS:**

Payment terms for all DuraChoice Co. orders are NET 30 days, subject to credit approval. Orders receive preferred treatment when the account is paid promptly. Orders may be delayed if any unpaid invoice exceeds 30 days.

### **DISCREPANCIES:**

All discrepancies in shipment/invoice must be reported within 10 days of receipt of goods.

### **FREIGHT ALLOWANCE:**

All orders for DuraChoice products are FOB from Dallas, Texas or the point of manufacture. Freight Charges will be prepaid for orders of \$2,000 NET or more to one destination within the continental United States. Any evidence of damage, shortage or concealed damage must be reported to DuraChoice Co. and a claim made with the delivery carrier within 10 days.

### **WARRANTY:**

Products are warranted against defects in workmanship and material for a period of one year from date of delivery, when properly installed and operated under normal use and service. Products having such defects will be replaced or credited to the purchaser's account as DuraChoice Co. elects. Liability is limited to the invoice value of the defective item. Our responsibility shall not exceed the original purchase price of the defective product. In any event, DuraChoice Co. shall not be held responsible for any special or consequential damages.

### **GENERAL:**

Prices, discounts and product specifications are subject to change without notice. Orders will be accepted subject to delays caused by accident, strike, fire or other causes beyond the control of the seller including failure of seller's suppliers to deliver. This price schedule supersedes all previous price schedules and quotes. All prices are subject to any applicable taxes imposed. The possession of this price schedule is not to be construed as an offer to sell at the prices shown. Special price requests for volume quotes will be accepted in writing only.

### **RETURN POLICY:**

No material may be returned without first obtaining written permission from DuraChoice Co. within 30 days from delivery. When accepted, any products returned must be in cleaned, new, or in immediate resalable condition. They also must be examined by a DuraChoice Co. representative. A 15% handling /restocking